



SUZUKI
PARTS CATALOGUE

RM250

(RJ18A)

RM250K7

RM250K8

2007-6

2ND EDITION



This part catalogue supersedes all the following part catalogue with immediate effect.

Model of catalogue	Part catalogue No.
RM250K7	9900B-28064

**INFORMATION
ILLUSTRATION INDEX**

1

**ENGINE
TRANSMISSION**

2

ELECTRICAL

3

BODY

4

PARTS NUMBER INDEX

5

RM250K7
RM250K8



PHOTO : RM250K7

PREFACE

When it becomes necessary to replace parts on SUZUKI MOTORCYCLES, always use SUZUKI GENUINE PARTS which have passed a strict inspection which guarantees quality and performance.

This parts catalogue covers the list of all service parts for SUZUKI RM250K7, RM250K8.

INSTRUCTIONS FOR QUOTING THE CATALOGUE

1. DIMENSIONS

Dimensions of the parts in this catalogue are indicated in unit millimeters.

2. ABBREVIATIONS

Abbreviations used in this catalogue are as follows:

AR	: As required	NT	: Number of teeth
ASSY	: Assembly	OPT	: Optional
E.No.	: Engine number	OS	: Over size
F.No.	: Frame number	STD	: Standard
D	: Diameter of material	T	: Thickness
ID	: Inside diameter	US	: Under size
OD	: Outside diameter	W	: Width
L	: Length		
LH	: Left hand side		
RH	: Right hand side		
~100045	: Up to F.No.100045		
100046~	: From F.No.100046		

12 x 34 x 5.6 Figures in the description column
| | | show the dimensions of parts.

ID OD T(or W, L)

→12345-56781 (Parts No.) : indicates that the parts number was changed to 12345-56781 and the new parts are interchangeable with the former ones but the former ones are not interchangeable with new ones.

←12345-56781 (Parts No.) : indicates that the former and new parts are interchangeable with each other and both are usable.

3. INNER PARTS OF ASSEMBLY

Part name with a dot (.) in front as shown in the description column indicates the component of the assembly also available individually.

4. MODIFICATION NOTICE

A parts bulletin will be sent to you on all occasions when changes in parts occur, including interchangeable modifications between new parts and old ones.

5. NOTE

5-1. There are some different parts from those of production models among spare parts for the administrative reasons and common use of them with other models.

5-2. In respect of rubber hoses and vinyl tubes, please be sure to use them by cutting off according to the length mentioned on parts catalogue or what is actually required on the vehicle.

5-3. Note that the drawings on the illustration page are for ready reference of spare parts number, not to be used as an assembly manual.
When assembling, use "SUZUKI SERVICE MANUAL".

6. SPECIFICATION CODE

This catalogue contains the parts for the model designed for the following spec.;
spec. code: E19.

7. SERIAL FRAME NUMBER

RM250K7 : JS1RJ18A000502068~

RM250K8 : JS1RJ18A000502709~

COLOR CHART
TABLEAU DES COULEURS

COLOR NO. NO DE COULEUR	COLOR DESCRIPTION DESCRIPTION DE COULEUR	COLOR NO. NO DE COULEUR	COLOR DESCRIPTION DESCRIPTION DE COULEUR
CFM	YCF,YU1		
DNA	U5J,U3Z		
DPZ	019,YMA		
DRA	Z12,019,YD8,YCF,YBD,YU1,YU8		
ELU	P21,U3Z		
EMA	Z12,1LE,019,YCF,YBD,YU1		
GY8	YU1,019		
P21	BLACK (LEATHER)		
U3Z	BLUE (LEATHER)		
U5J	PARSEC BLUE (LEATHER)		
YBD	SPLASH WHITE		
YCF	LUMINOUS ORANGE		
YD8	SONIC SILVER METALLIC		
YKS	FIERY RED		
YMA	OFF WHITE NO.2		
YU1	CHAMPION YELLOW		
YU8	FLINT GRAY METALLIC		
Z12	CANDY ARCTIC BLUE		
019	BLACK		
1LE	PEARL MEDIUM BLUE		
30H	SPECIAL WHITE		

MILLIMETER→INCH CONVERSION CHART

	0	1	2	3	4	5	6	7	8	9
00	.000	.039	.079	.118	.157	.197	.236	.276	.315	.354
10	.394	.433	.472	.512	.551	.591	.630	.669	.709	.748
20	.787	.827	.866	.906	.945	.984	1.024	1.063	1.102	1.142
30	1.181	1.220	1.260	1.299	1.339	1.378	1.417	1.457	1.496	1.535
40	1.575	1.614	1.654	1.693	1.732	1.772	1.811	1.850	1.890	1.929
50	1.969	2.008	2.047	2.087	2.126	2.165	2.205	2.214	2.283	2.323
60	2.362	2.402	2.441	2.480	2.520	2.559	2.598	2.638	2.677	2.717
70	2.756	2.795	2.835	2.874	2.913	2.953	2.992	3.031	3.071	3.110
80	3.150	3.189	3.228	3.268	3.307	3.346	3.386	3.425	3.465	3.504
90	3.543	3.583	3.622	3.661	3.701	3.740	3.780	3.819	3.858	3.898

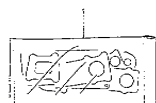
How to read

	0	1	2	3	4
00	---	---	---	---	---
10	---	---	---	---	---
20	---	---	---	0.906	---
30	---	---	---	---	---

23 millimeters equal 0.906 inch

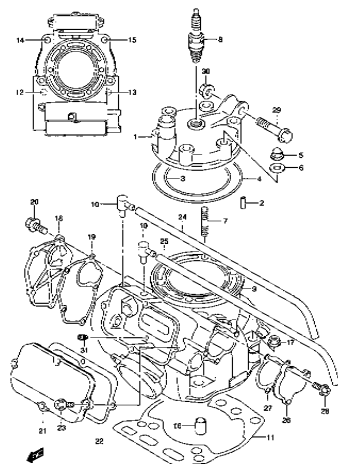
Contents are subject to change without notice or obligation.

FIG.1 GASKET SET (B-2)



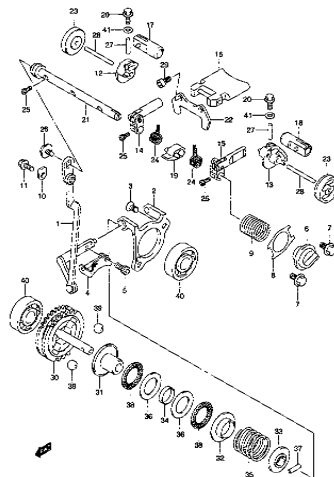
FM250K7 E19_001
GASKET SET-C

FIG.2 CYLINDER (B-3)



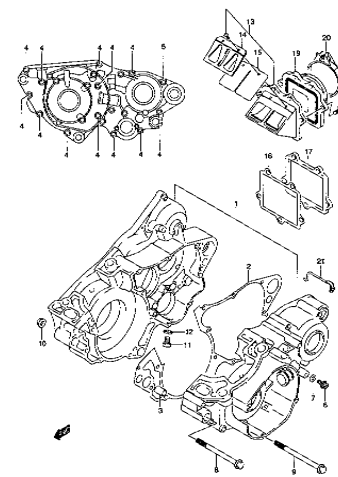
FM250K7 E19_002
CYLINDER-C

FIG.3 EXHAUST VALVE (B-4)



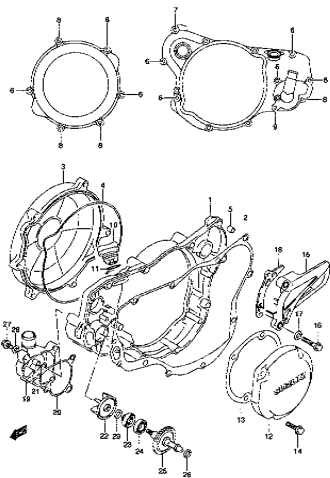
FM250K7 E19_003
EXHAUST VALVE-C

FIG.4 CRANKCASE (B-6)



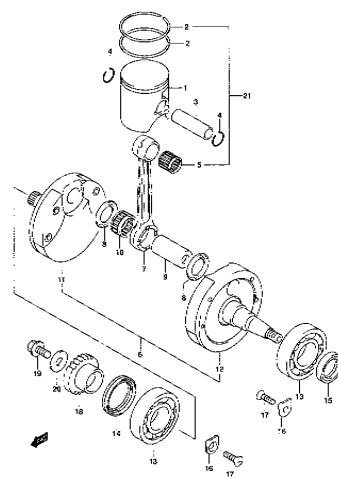
FM250K7 E19_004
CRANKCASE-C

FIG.5 CRANKCASE COVER-WATER PUMP (B-7)



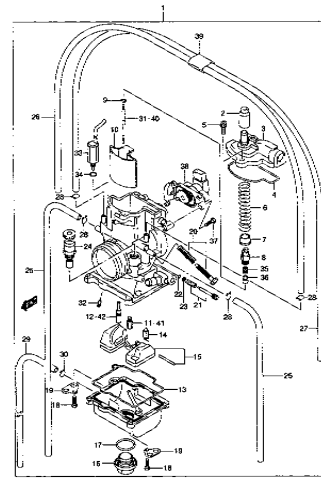
FM250K7 E19_005
CRANKCASE COVER-WATER PUMP-C

FIG.6 CRANKSHAFT (B-8)



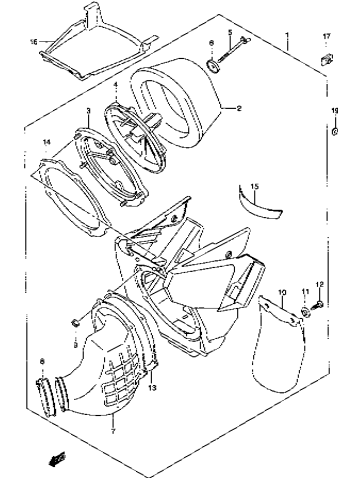
FM250K7 E19_006
CRANKSHAFT-C

FIG.7 CARBURETOR (B-9)



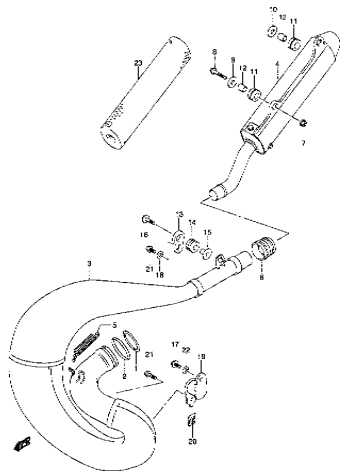
FM250K7 E19_007
CARBURETOR-C

FIG.8 AIR CLEANER (B-12)



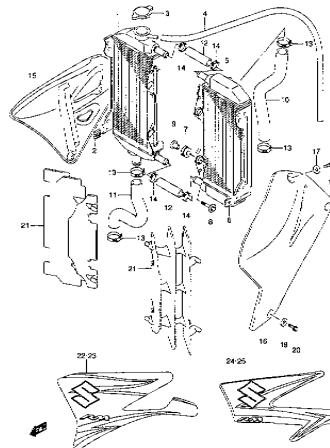
FM250K7 E19_008
AIR CLEANER-C

FIG.9 MUFFLER (B-13)



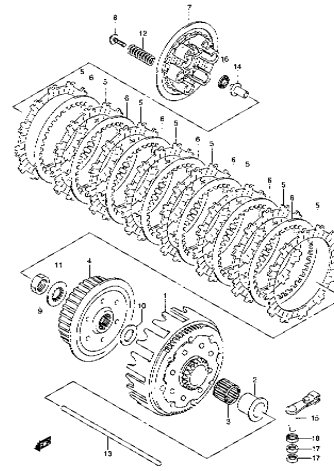
RM250K7 E19_009
MUFFLER C

FIG.10 RADIATOR (B-14)



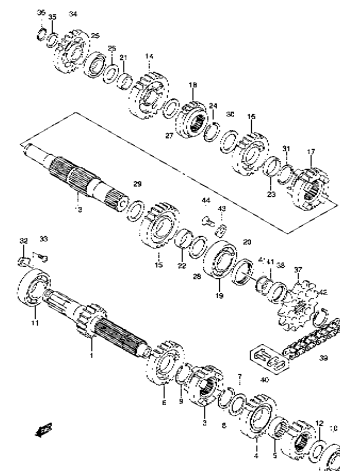
RM250K7 E19_010
RADIATOR C

FIG.11 CLUTCH (C-2)



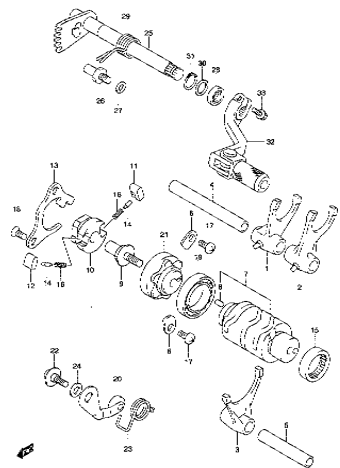
RM250K7 E19_011
CLUTCH C

FIG.12 TRANSMISSION (C-3)



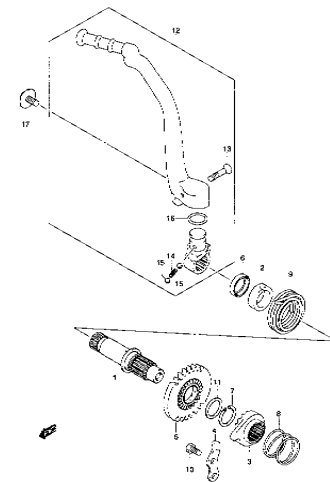
RM250K7 E19_012
TRANSMISSION C

FIG.13 GEAR SHIFTING (C-5)



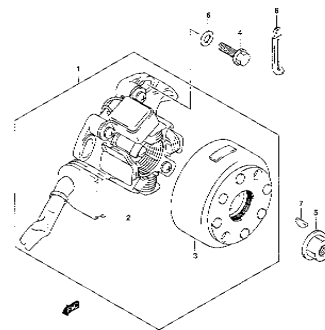
RM250K7 E19_013
GEAR SHIFTING C

FIG.14 KICK STARTER (C-6)



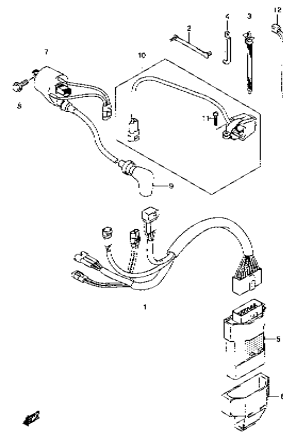
RM250K7 E19_014
KICK STARTER C

FIG.15 MAGNETO (C-7)



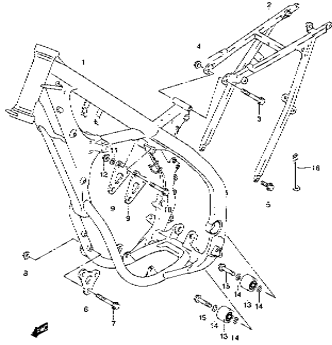
RM250K7 E19_015
MAGNETO C

FIG.16 ELECTRICAL (C-8)



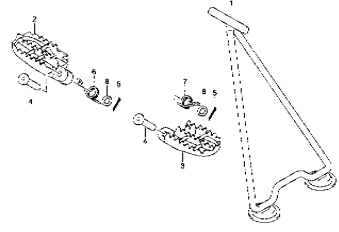
RM250K7 E19_016
ELECTRICAL C

FIG.17 FRAME (D-2)



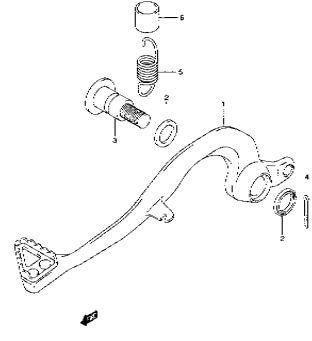
RM250K7 E19_017
FRAME-C

FIG.18 STAND / FOOTREST (D-3)



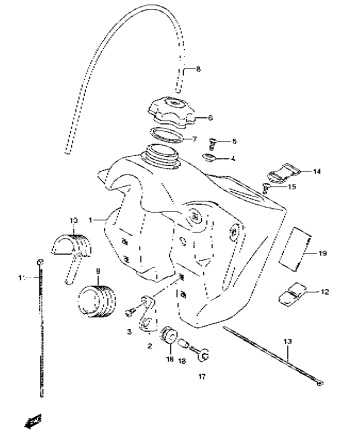
RM250K7 E19_018
STAND/FOOTREST-C

FIG.19 REAR BRAKE (D-4)



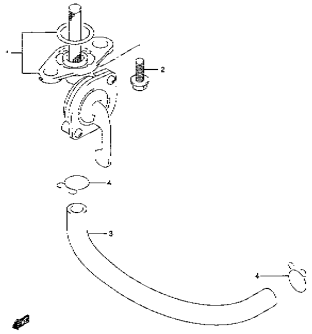
RM250K7 E19_019
REAR BRAKE-C

FIG.20 FUEL TANK (D-5)



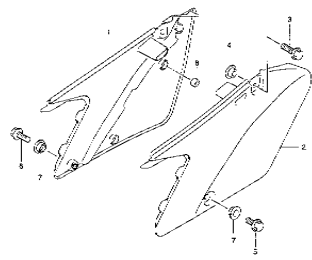
RM250K7 E19_020
FUEL TANK-C

FIG.21 FUEL COCK (D-6)



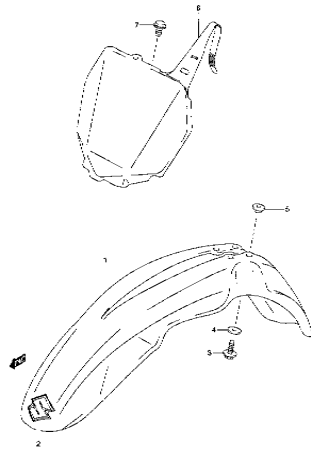
RM250K7 E19_021
FUEL COCK-C

FIG.22 FRAME COVER (D-7)



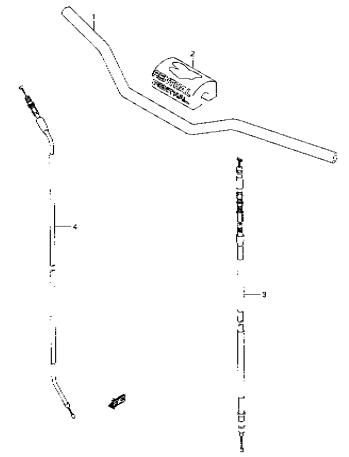
RM250K7 E19_022
FRAME COVER-C

FIG.23 FRONT FENDER (D-8)



RM250K7 E19_023
FRONT FENDER-C

FIG.24 HANDLEBAR (D-9)



RM250K7 E19_024
HANDLE BAR-C

FIG.25 HANDLE LEVER (D-10)

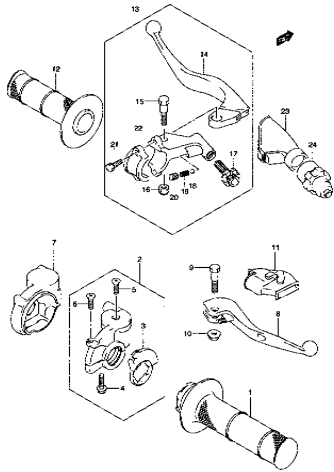


FIG.25K1 E19_025
HANDLE LEVER-C

FIG.26 REAR FENDER (D-11)

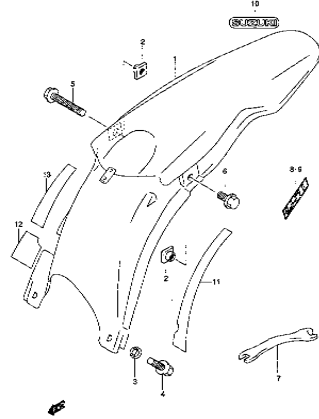


FIG.26K1 E19_026
REAR FENDER-C

FIG.27 LABEL (D-12)

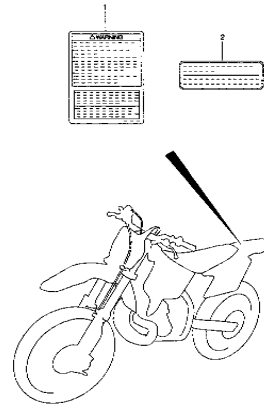


FIG.27K1 E19_027
LABEL-C

FIG.28 SEAT (E-2)

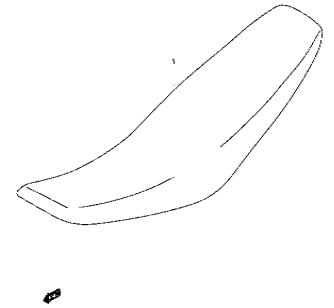


FIG.28K1 E19_028
SEAT-C

FIG.29 FRONT DAMPER (E-3)

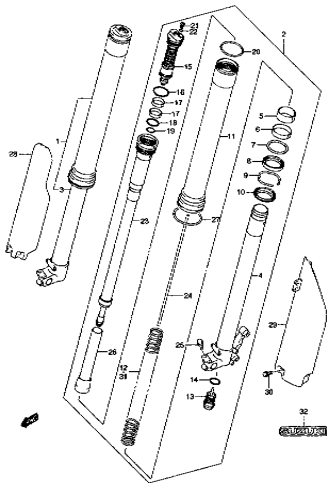


FIG.29K1 E19_029
FRONT FORK DAMPER-C

FIG.30 STEERING STEM (E-4)

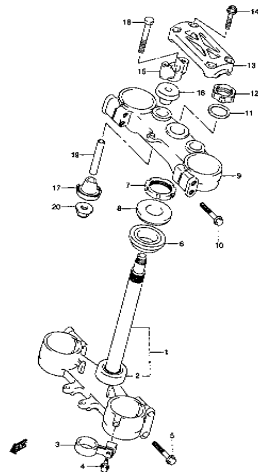


FIG.30K1 E19_030
STEERING STEM-C

FIG.31 FRONT WHEEL (E-5)

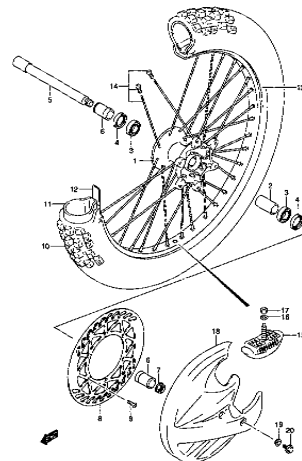


FIG.31K1 E19_031
FRONT WHEEL-C

FIG.32 FRONT CALIPER (E-6)

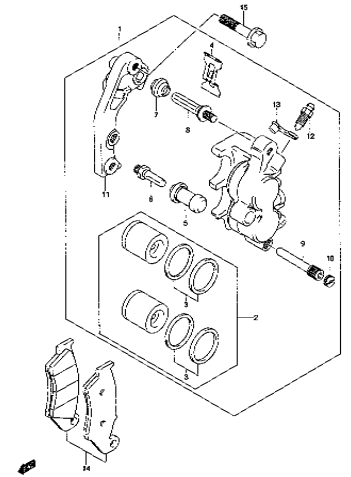
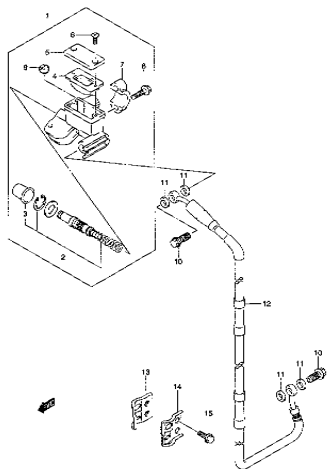


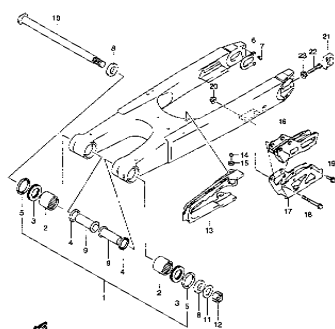
FIG.32K1 E19_032
FRONT CALIPER-C

FIG.33 FRONT MASTER CYLINDER [E-7]



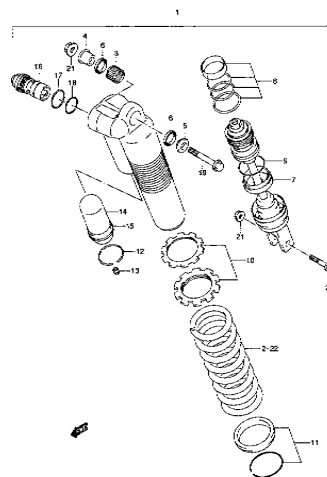
RM250K7 E19_033
FRONT MASTER CYLINDER-C

FIG.34 REAR SWINGING ARM [E-8]



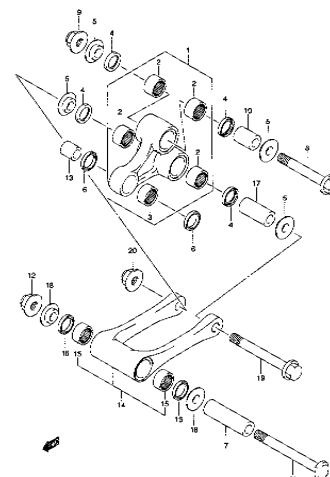
RM250K7 E19_034
REAR SWINGING ARM-C

FIG.35 REAR SHOCK ABSORBER [E-9]



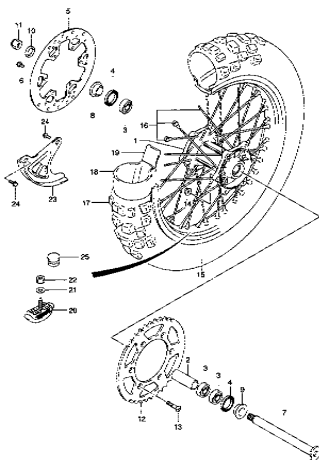
RM250K7 E19_035
REAR SHOCK ABSORBER-C

FIG.36 REAR CUSHION LEVER [E-10]



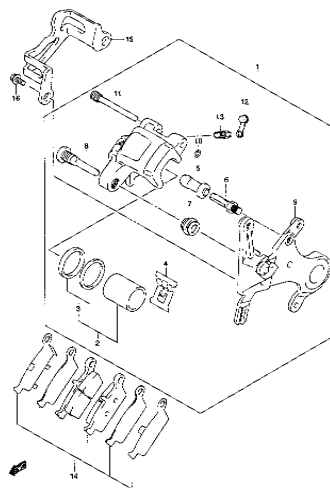
RM250K7 E19_036
REAR CUSHION LEVER-C

FIG.37 REAR WHEEL [E-11]



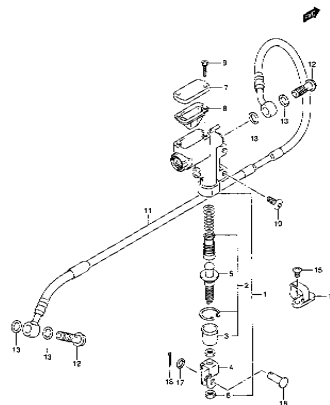
RM250K7 E19_037
REAR WHEEL-C

FIG.38 REAR CALIPER [E-12]



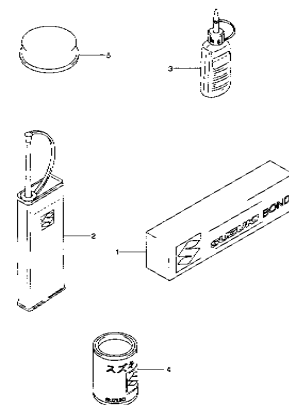
RM250K7 E19_038
REAR CALIPER-C

FIG.39 REAR MASTER CYLINDER [E-13]



RM250K7 E19_039
REAR MASTER CYLINDER-C

FIG.40 OPTIONAL [E-14]



RM250K7 E19_040
OPTIONAL-C

FIG.1

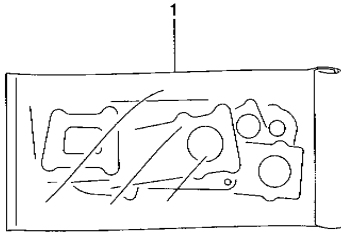


FIG.1 (B-2) GASKET SET

REF NO.	PART NO.	DESCRIPTION	QTY	REMARKS
1	11401-37811	GASKET SET	1	OPT
2	11147-37F00	·O RING, CYLINDER HEAD NO.1	1	NOT SHOWN
3	11148-37F00	·O RING, CYLINDER HEAD NO.2	1	NOT SHOWN
4	11233-37F20	·GASKET, CYLINDER COVER NO.1	1	NOT SHOWN
5	11234-37F20	·GASKET, CYLINDER COVER NO.3	1	NOT SHOWN
6	11238-37F20	·GASKET, CYLINDER COVER NO.2	1	NOT SHOWN
7	11241-37F20	·GASKET, CYLINDER	1	NOT SHOWN
8	11481-37F20	·GASKET, CRANKCASE	1	NOT SHOWN
9	11482-37F01	·GASKET, CLUTCH COVER	1	NOT SHOWN
10	11483-37E02	·GASKET, MAGNETO COVER	1	NOT SHOWN
11	11484-37E00	·O RING, CLUTCH COVER OUTER	1	NOT SHOWN
12	14171-28C30	·O RING, EXHAUST PIPE	1	NOT SHOWN
13	14172-28C30	·WASHER, EXHAUST PIPE	1	NOT SHOWN

FIG.2

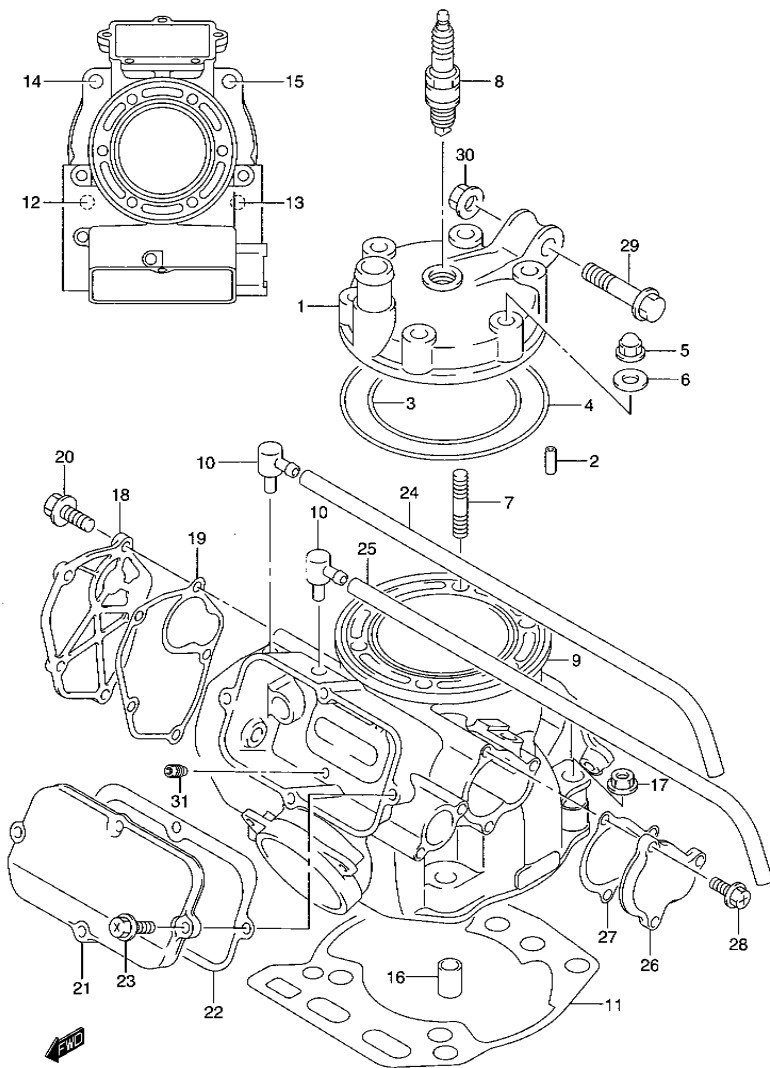


FIG.2 (B-3) CYLINDER

REF NO.	PART NO.	DESCRIPTION	Q'TY	REMARKS
1	11111-37F40	HEAD, CYLINDER	1	
2	04221-04089	PIN	2	
3	11147-37F00	O RING, CYLINDER HEAD NO.1	1	
4	11148-37F00	O RING, CYLINDER HEAD NO.2	1	
5	09159-08049	NUT	6	
6	09168-08021	WASHER	6	
7	09108-08227	STUD BOLT (L:38)	6	
8	09482-00561	SPARK PLUG (NGK, BR8EG)	1	
9	11201-37860	CYLINDER SET	1	
10	16910-09401	UNION, CYLINDER	2	
11	11241-37F20	GASKET, CYLINDER	1	
12	01421-1030A	STUD BOLT (L:30)	1	
13	01421-1040A	STUD BOLT (L:40)	1	
14	01421-1050A	STUD BOLT (L:50)	1	
15	09108-10141	STUD BOLT (L:55)	1	
16	09206-13017	PIN	2	
17	09159-10108	NUT	4	
18	11231-37F20	COVER, CYLINDER NO.1	1	
19	11233-37F20	GASKET, CYLINDER COVER NO.1	1	
20	09103-05023	BOLT	5	
21	11248-37F20	COVER, CYLINDER NO.2	1	
22	11238-37F20	GASKET, CYLINDER COVER NO.2	1	
23	09103-05023	BOLT	4	
24	09352-50823-600	HOSE (5X8.2X600)	1	L:600→390
25	09352-50823-600	HOSE (5X8.2X600)	1	L:600→360
26	11249-37F20	COVER, CYLINDER NO.3	1	
27	11234-37F20	GASKET, CYLINDER COVER NO.3	1	
28	09103-05023	BOLT	3	
29	09103-10149	BOLT (10X48)	1	
30	09159-10078	NUT	1	
31	11252-37F20	SCREW, EXHAUST VALVE DRAIN	1	

FIG.3

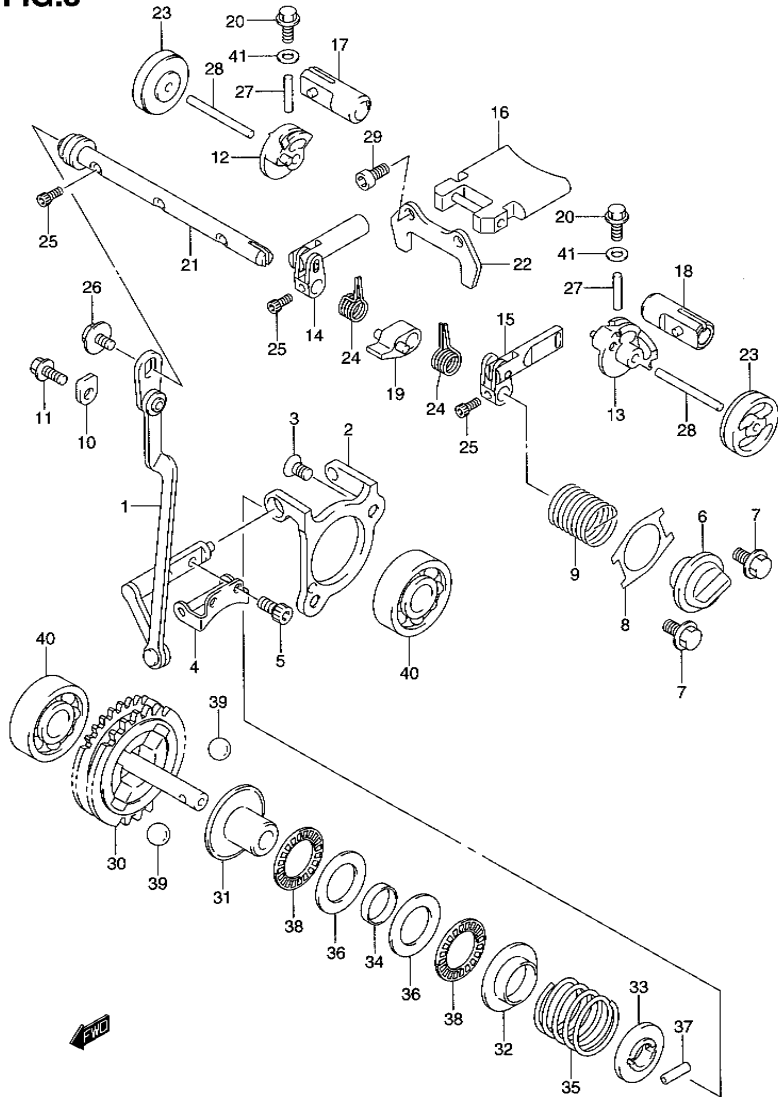


FIG.3 (B-4) EXHAUST VALVE

REF NO.	PART NO.	DESCRIPTION	QTY	REMARKS
1	12689-37F50	ACTUATOR, EXHAUST VALVE	1	
2	12681-03B00	BASE, ACTUATOR	1	
3	09120-05003	SCREW, ACTUATOR BASE	2	
4	12682-36F21	ARM, ACTUATOR	1	
5	09106-04003	BOLT, ACTUATOR ARM	2	
6	11274-37F20	CAP, EXHAUST VALVE SHAFT SPRING	1	
7	09103-05022	BOLT, EXHAUST VALVE CAP	2	
8	11279-37F30	GASKET, EXHAUST VALVE SPRING	1	
9	11257-37E10	SPRING, EXHAUST VALVE SHAFT	1	
10	24741-21A00	RETAINER, EXHAUST VALVE SHAFT STOP	1	
11	09103-06256	BOLT, EXHAUST VALVE SHAFT STOP	1	
12	11202-37F50	CAM COMP, EXHAUST SIDE VALVE, RH	1	
13	11203-37F50	CAM COMP, EXHAUST SIDE VALVE, LH	1	
14	11204-37F50	ROD ASSY, EXHAUST SIDE VALVE CAM, RH	1	
15	11205-37F50	ROD ASSY, EXHAUST SIDE VALVE CAM, LH	1	
16	11206-37F50	VALVE ASSY, EXHAUST MAIN	1	
17	11207-37F50	VALVE ASSY, EXHAUST SIDE, RH	1	
18	11208-37F50	VALVE ASSY, EXHAUST SIDE, LH	1	
19	11209-37F50	ARM, EXHAUST MAIN VALVE	1	
20	11251-37F20	CAP, EXHAUST SIDE VALVE	2	
21	11259-37F21	SHAFT, EXHAUST VALVE	1	
22	11261-37F40	PLATE, EXHAUST MAIN VALVE	1	
23	11273-37F50	SPACER, EXHAUST SIDE VALVW	2	
24	11288-37F40	SPRING, EXHAUST MAIN VALVE ARM	2	
25	09106-04003	BOLT, EXHAUST VALVE SHAFT	3	
26	09118-05003	BOLT, EXHAUST VALVE SHAFT	1	
27	09261-04005	PIN, EXHAUST SIDE VALVE STOP (4X23.8)	2	
28	09261-04014	PIN (4X39.8)	2	
29	07130-0512B	BOLT, EXHAUST MAIN VALVE PLATE	2	

FIG.3

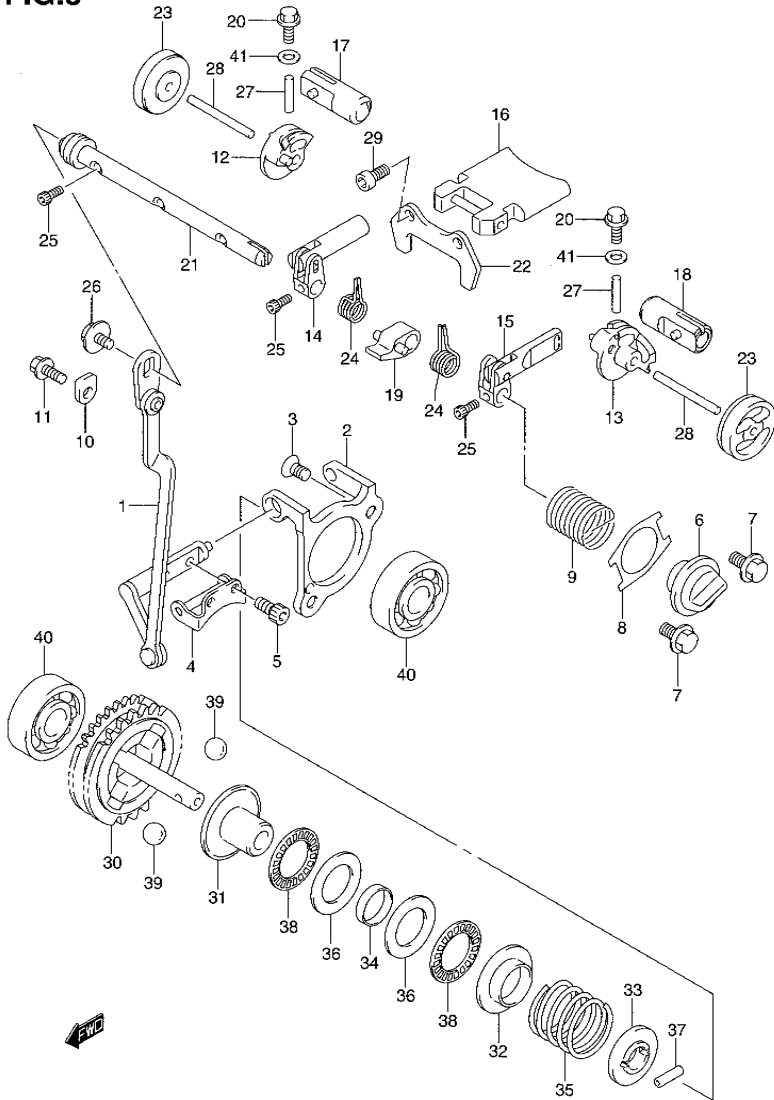


FIG.3 (B-5) EXHAUST VALVE

REF NO.	PART NO.	DESCRIPTION	Q'TY	REMARKS
30	12670-37830	GOVERNOR, DRIVE	1	
31	12672-36F10	GOVERNOR, DRIVEN	1	
32	12674-36F10	STOPPER, GOVERNOR SPRING NO.1	1	
33	12675-36F11	STOPPER, GOVERNOR SPRING NO.2	1	
34	12676-36F10	SPACER, GOVERNOR	1	
35	12677-37F40	SPRING, GOVERNOR	1	
36	09181-15223	WASHER, GOVERNOR THRUST	2	
37	09261-03017	PIN, GOVERNOR SHAFT	1	
38	09263-15003	BEARING, GOVERNOR THRUST	2	
39	06111-12004	BALL, GOVERNOR	5	
40	09262-08005	BEARING, GOVERNOR SHAFT	2	
41	09168-08015	GASKET	2	

FIG.4

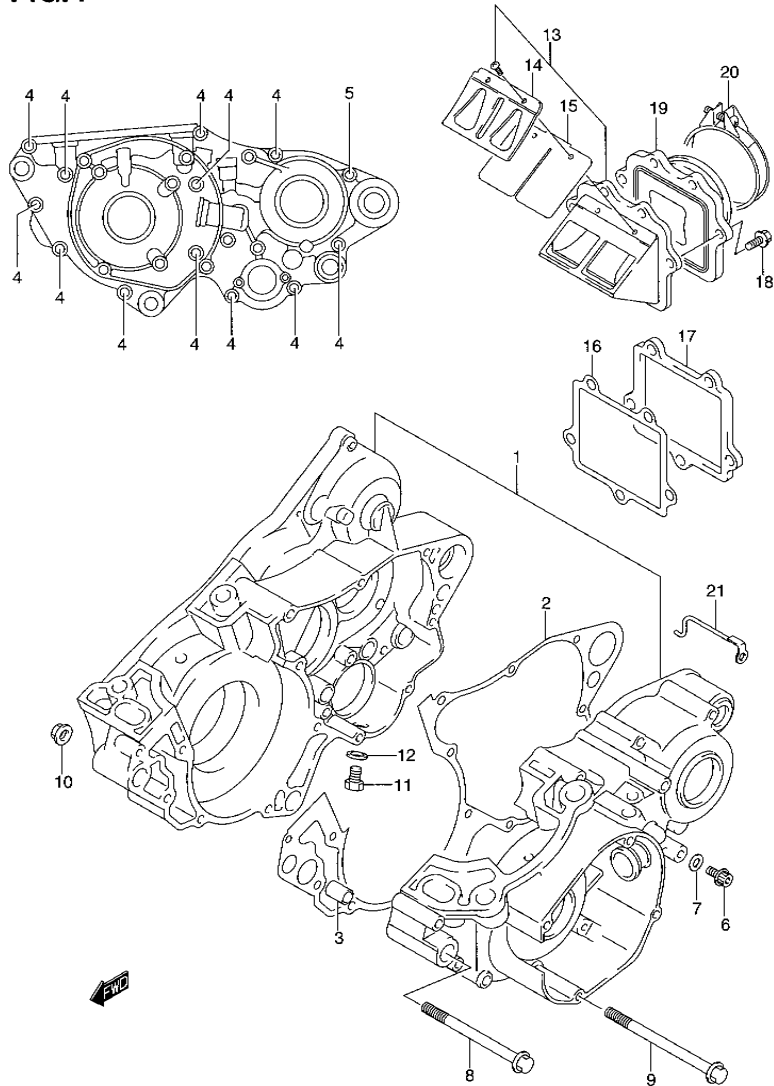


FIG.4 (B-6) CRANKCASE

REF NO.	PART NO.	DESCRIPTION	QTY	REMARKS
1	11301-37860	CRANKCASE SET	1	
2	11481-37F20	·GASKET, CRANKCASE	1	
3	09206-13017	·PIN	2	
4	09103-06244	·BOLT (L:50)	12	
5	09103-06245	·BOLT (L:65)	1	
6	07120-0610B	·BOLT, OIL CHECK	1	
7	09168-06004	·GASKET	1	
8	09103-10087	BOLT (10X105)	1	
9	09103-10399	BOLT (10X125)	1	
10	09159-10078	NUT	2	
11	09247-12012	PLUG, DRAIN	1	
12	09168-12002	GASKET, OIL DRAIN PLUG	1	
13	13150-37F30	VALVE ASSY, REED	1	
14	13152-37F00	·STOPPER, REED VALVE	2	
15	13153-37F30	·VALVE, REED	2	
16	13155-37F00	GASKET, REED VALVE	1	
17	13156-37F00	SPACER, REED VALVE	1	
18	09103-06250	BOLT	5	
19	13110-37F40	PIPE, INTAKE	1	
20	09402-56901	CLAMP	1	
21	13694-37F30	GUIDE, CARBURETOR HOSE	1	

FIG.5

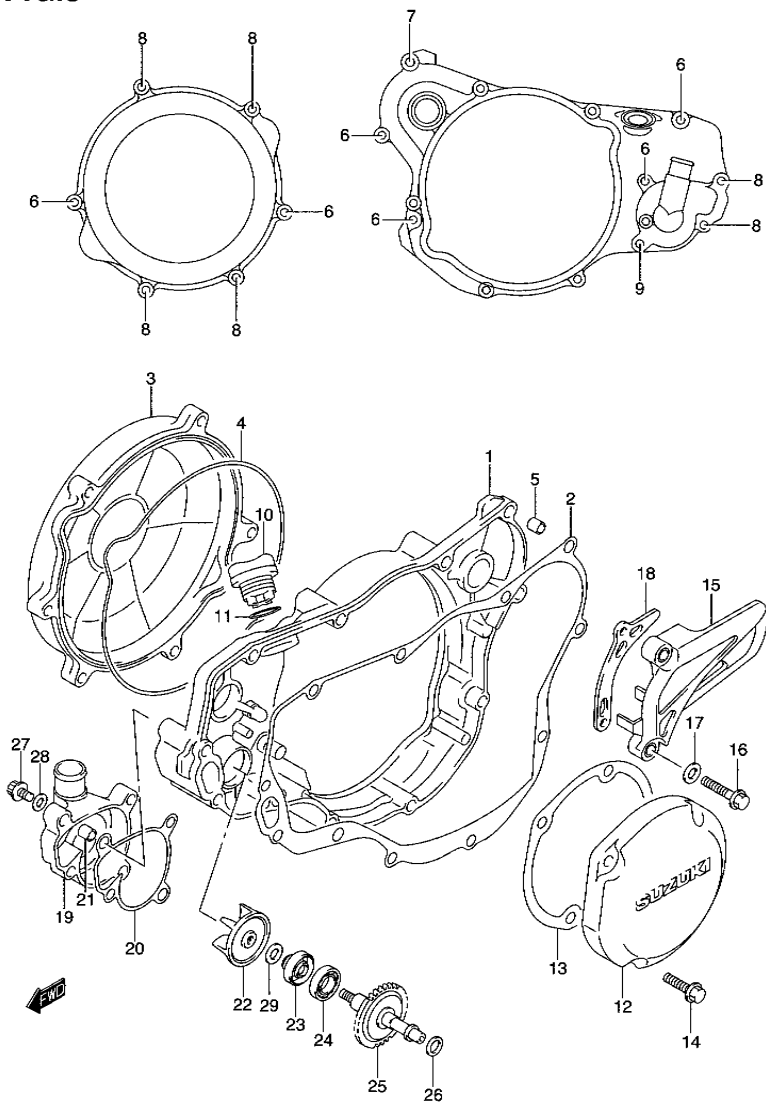


FIG.5 (B-7) CRANKCASE COVER-WATER PUMP

REF NO.	PART NO.	DESCRIPTION	QTY	REMARKS
1	11341-37F20	COVER, CLUTCH	1	
2	11482-37F01	GASKET, CLUTCH COVER	1	
3	11371-37F01	COVER, CLUTCH OUTER	1	
4	11484-37E00	O RING, CLUTCH OUTER COVER	1	
5	04211-09109	PIN	2	
6	09103-06250	BOLT	6	
7	09103-06251	BOLT	1	
8	09103-06253	BOLT	6	
9	09103-06245	BOLT	1	
10	11971-25D00	PLUG, OIL FILLER	1	
11	09280-17003	O RING	1	
12	11351-37F00	COVER, MAGNETO	1	
13	11483-37E02	GASKET, MAGNETO COVER	1	
14	01547-06207	BOLT	4	
15	11360-36E00	COVER, SPROCKET	1	
16	09103-06251	BOLT	2	
17	08322-0106B	WASHER	2	
18	27641-37E00	PLATE, CHAIN GUIDE	1	
19	17411-37F10	CASE, WATER PUMP	1	
20	17431-37F00	GASKET, WATER PUMP CASE	1	
21	04211-09109	PIN	2	
22	17491-37F10	IMPELLER, WATER PUMP	1	
23	17461-37F00	SEAL, WATER PUMP OIL	1	
24	08113-69010	BEARING	1	
25	17510-37F10	SHAFT, WATER PUMP	1	
26	09181-08139	WASHER	1	
27	07120-0610B	BOLT, WATER PUMP DRAIN	1	
28	09168-06004	GASKET	1	
29	08211-06121	WASHER, WATER PUMP IMPELLER	1	

* Shigaoe 2010-37893

FIG.6

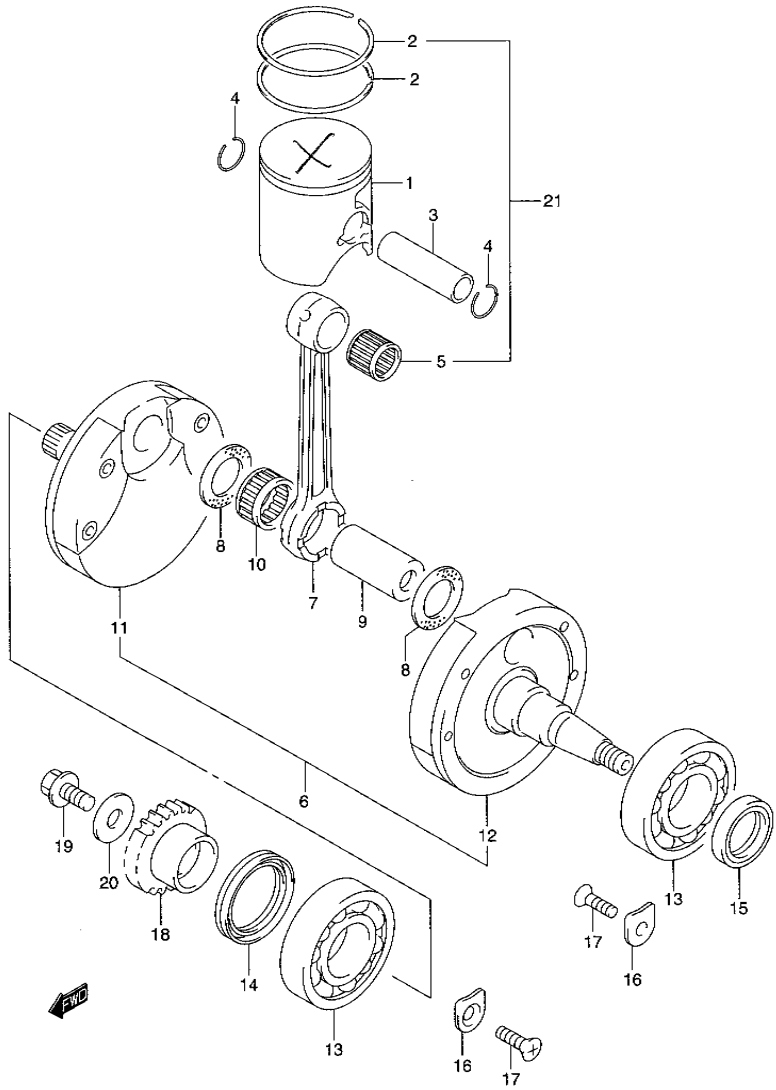


FIG.6 (B-8) CRANKSHAFT

REF NO.	PART NO.	DESCRIPTION	QTY	REMARKS
1	12110-37F30-0F0	PISTON	1	
2	12141-37F00	RING, PISTON	2	
3	12151-28C00	PIN, PISTON	1	
4	09381-18002	CIRCLIP	2	
5	09263-18031	BEARING	1	
6	12200-37F40	CRANKSHAFT ASSY	1	
7	12161-37F20	ROD, CONNECTING	1	
8	09160-24033	WASHER	2	
9	12210-37F20	PIN, CRANK	1	
10	09263-24026	BEARING, CRANK PIN	1	
11	12220-37F40	CRANKSHAFT, RH	1	
12	12260-37F40	CRANKSHAFT, LH	1	
13	09262-28044	BEARING, CRANKSHAFT	2	
14	09283-28025	OIL SEAL, CRANKSHAFT RH	1	
15	09283-25099	OIL SEAL, CRANKSHAFT LH	1	
16	24741-37F00	RETAINER, CRANKSHAFT BEARING	4	
17	02122-0612B	SCREW	4	
18	21111-37F20	GEAR, PRIMARY DRIVE (NT:21)	1	
19	09103-10339	BOLT, PRIMARY DRIVE GEAR	1	
20	09164-11004	WASHER	1	
21	12110-37830	PISTON KIT	1	OPT
22	12110-37F30-0F0	PISTON	1	NOT SHOWN
23	12141-37F00	RING, PISTON	2	NOT SHOWN
24	12151-28C00	PIN, PISTON	1	NOT SHOWN
25	09263-18031	BEARING, PISTON PIN	1	NOT SHOWN
26	09381-18002	CIRCLIP	2	NOT SHOWN

2

FIG.7

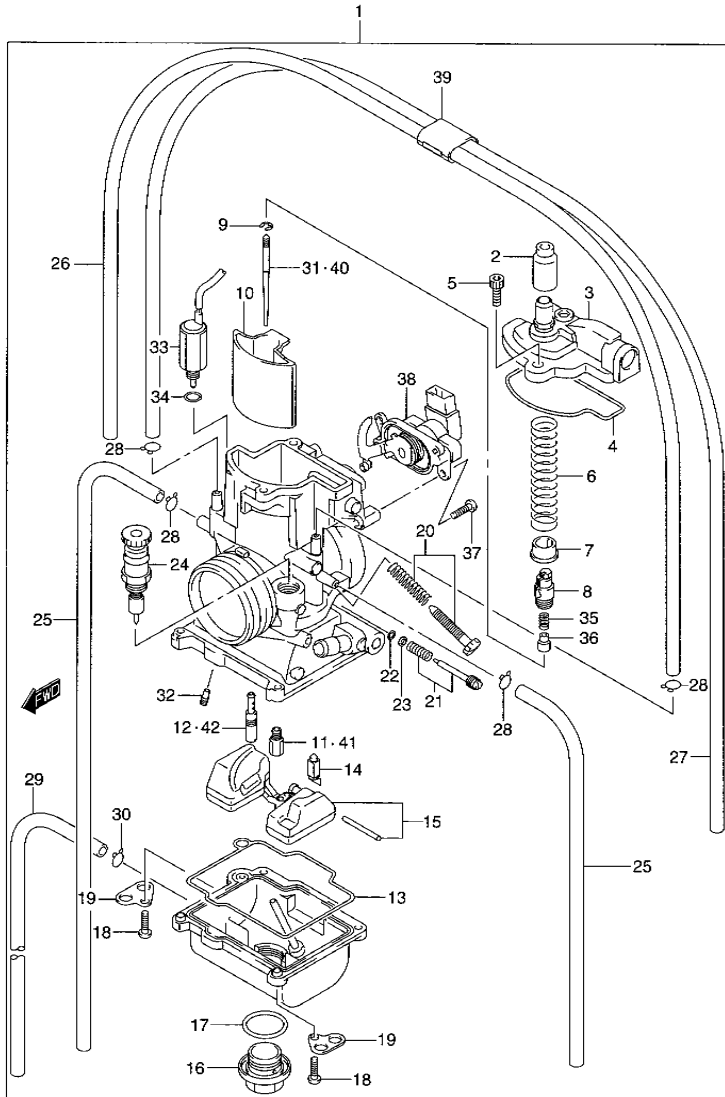


FIG.7 (B-9) CARBURETOR

REF NO.	PART NO.	DESCRIPTION	Q'TY	REMARKS
1	13200-37F80	CARBURETOR ASSY	1	
2	13681-43D30	•CAP, CARBURETOR	1	
3	13261-37F80	•TOP	1	
4	13262-37F80	•O RING	1	
5	13262-37F00	•SCREW	2	
6	13573-37F00	•SPRING, THROTTLE VALVE	1	
7	13424-43D30	•COLLAR, THROTTLE VALVE	1	
8	13581-37F80	•HOLDER, CABLE	1	
9	13394-28E00	•CLIP, NEEDLE	1	
10	13551-37F80	•VALVE, THROTTLE	1	
11	09491-34011	•JET, MAIN (172)	1	
12	09492-50023	•JET, PILOT (50)	1	
13	13696-44E00	•GASKET, FLOAT CHAMBER	1	
14	13370-43D30	•VALVE SET, FLOAT	1	
15	13240-36E20	•FLOAT SET	1	
16	13247-28E00	•BOLT, DRAIN	1	
17	13246-28E00	•O RING	1	
18	13602-26E10	•SCREW	4	
19	13693-36E00	•PLATE	2	
20	13270-43D30	•SCREW SET, STOP	1	
21	13280-43D30	•SCREW SET, AIR	1	1, 1/2
22	13295-26E00	•O RING	1	
23	13291-26E00	•WASHER	1	
24	13410-43D30	•STARTER VALVE	1	
25	13686-36E00	•HOSE (4X7X620)	2	RH L:620→400 LH L:620→360
26	13686-36E00	•HOSE (4X7X620)	1	L:620→600
27	13686-36E00	•HOSE (4X7X620)	1	L:620→550
28	09401-06101	•CLIP	4	
29	09351-35653-600	•HOSE (3.5X6.5X600)	1	L:600→300
30	09401-05402	•CLIP	1	

FIG.7

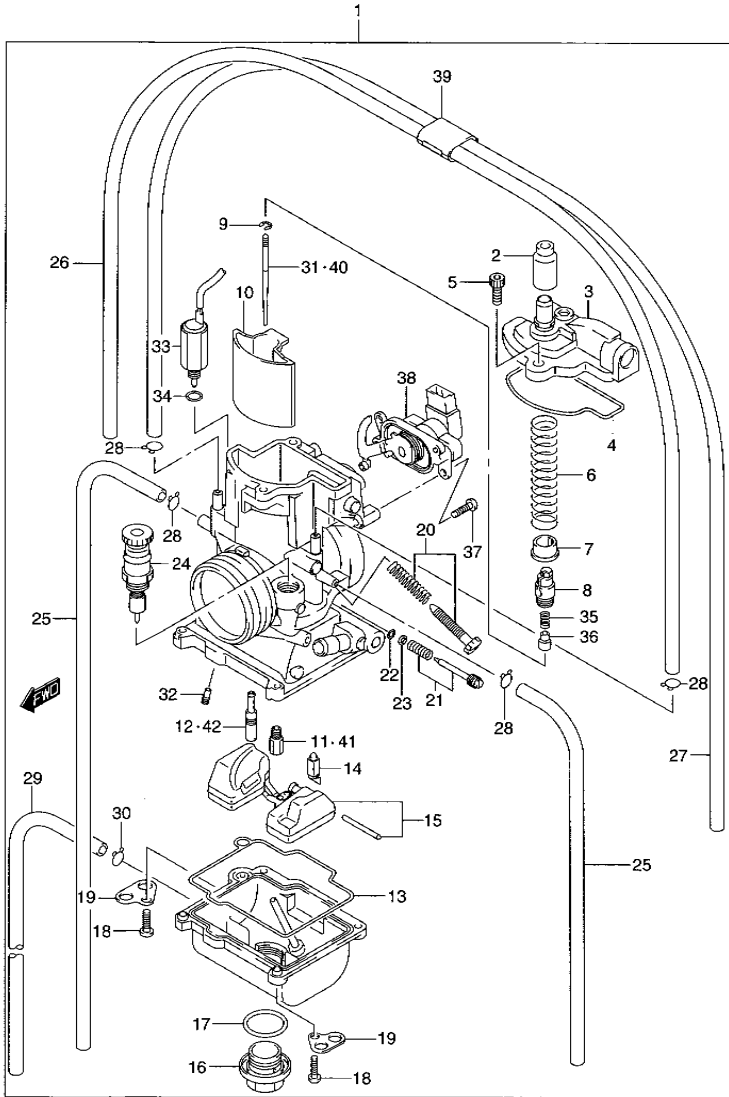


FIG.7 (B-10) CARBURETOR

REF NO.	PART NO.	DESCRIPTION	QTY	REMARKS
31	13383-37FK0	·NEEDLE, JET	1	
32	09492-55019	·JET, POWER (55)	1	
33	13160-37E01	·SOLENOID ASSY	1	
34	13453-37E00	·O RING	1	
35	13582-37F80	·SPRING	1	
36	13583-37F80	·COLLAR	1	
37	13602-37F00	·SCREW	1	
38	13580-37F80	·SENSOR ASSY	1	
39	13451-37F00	·CLIP	1	
40-1	13383-37FA0	NEEDLE, JET (NECF)	1	OPT
40-2	13383-37FB0	NEEDLE, JET (NECG)	1	OPT
40-3	13383-37FC0	NEEDLE, JET (NECH)	1	OPT
40-4	13383-37FD0	NEEDLE, JET (NECW)	1	OPT
40-5	13383-37FE0	NEEDLE, JET (NECJ)	1	OPT
40-6	13383-37FF0	NEEDLE, JET (NECK)	1	OPT
40-7	13383-37FG0	NEEDLE, JET (NECL)	1	OPT
40-8	13383-37FH0	NEEDLE, JET (NEDF)	1	OPT
40-9	13383-37FJ0	NEEDLE, JET (NEDG)	1	OPT
40-10	13383-37FK0	NEEDLE, JET (NEDH)	1	OPT
40-11	13383-37FL0	NEEDLE, JET (NEDW)	1	OPT
40-12	13383-37FM0	NEEDLE, JET (NEDJ)	1	OPT
40-13	13383-37FN0	NEEDLE, JET (NEDK)	1	OPT
40-14	13383-37FP0	NEEDLE, JET (NEDL)	1	OPT
41-1	09491-30018	JET, MAIN (150)	1	OPT
41-2	09491-30019	JET, MAIN (152)	1	OPT
41-3	09491-31012	JET, MAIN (155)	1	OPT
41-4	09491-31013	JET, MAIN (158)	1	OPT
41-5	09491-32010	JET, MAIN (160)	1	OPT
41-6	09491-32011	JET, MAIN (162)	1	OPT
41-7	09491-33009	JET, MAIN (165)	1	OPT
41-8	09491-33010	JET, MAIN (168)	1	OPT
41-9	09491-34010	JET, MAIN (170)	1	OPT
41-10	09491-34011	JET, MAIN (172)	1	OPT

FIG.7

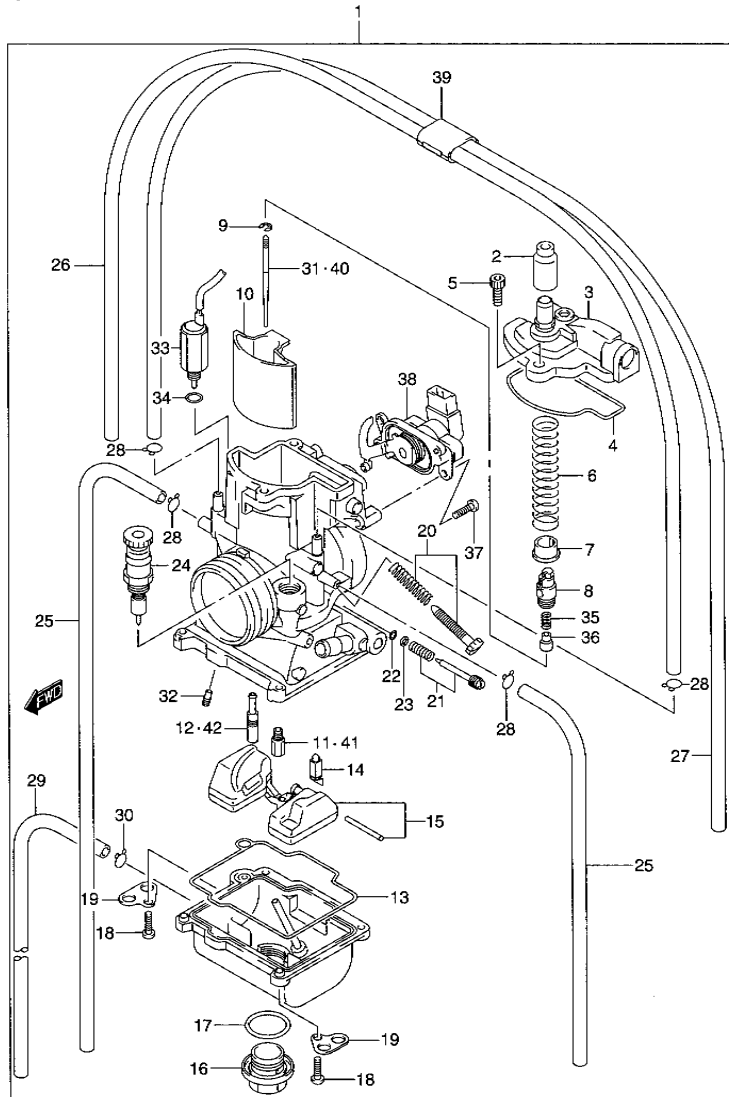


FIG.7 (B-11) CARBURETOR

REF NO.	PART NO.	DESCRIPTION	QTY	REMARKS
41-11	09491-35009	JET, MAIN (175)	1	OPT
41-12	09491-35010	JET, MAIN (178)	1	OPT
41-13	09491-36008	JET, MAIN (180)	1	OPT
41-14	09491-37008	JET, MAIN (185)	1	OPT
41-15	09491-38011	JET, MAIN (190)	1	OPT
41-16	09491-39001	JET, MAIN (195)	1	OPT
41-17	09491-40013	JET, MAIN (200)	1	OPT
41-18	09491-41001	JET, MAIN (205)	1	OPT
41-19	09491-42006	JET, MAIN (210)	1	OPT
42-1	09492-35019	JET, PILOT (35)	1	OPT
42-2	09492-40022	JET, PILOT (40)	1	OPT
42-3	09492-42019	JET, PILOT (42)	1	OPT
42-4	09492-45032	JET, PILOT (45)	1	OPT
42-5	09492-48013	JET, PILOT (48)	1	OPT
42-6	09492-50023	JET, PILOT (50)	1	OPT
42-7	09492-52011	JET, PILOT (52)	1	OPT
42-8	09492-55017	JET, PILOT (55)	1	OPT
42-9	09492-58001	JET, PILOT (58)	1	OPT
42-10	09492-60016	JET, PILOT (60)	1	OPT

FIG.8

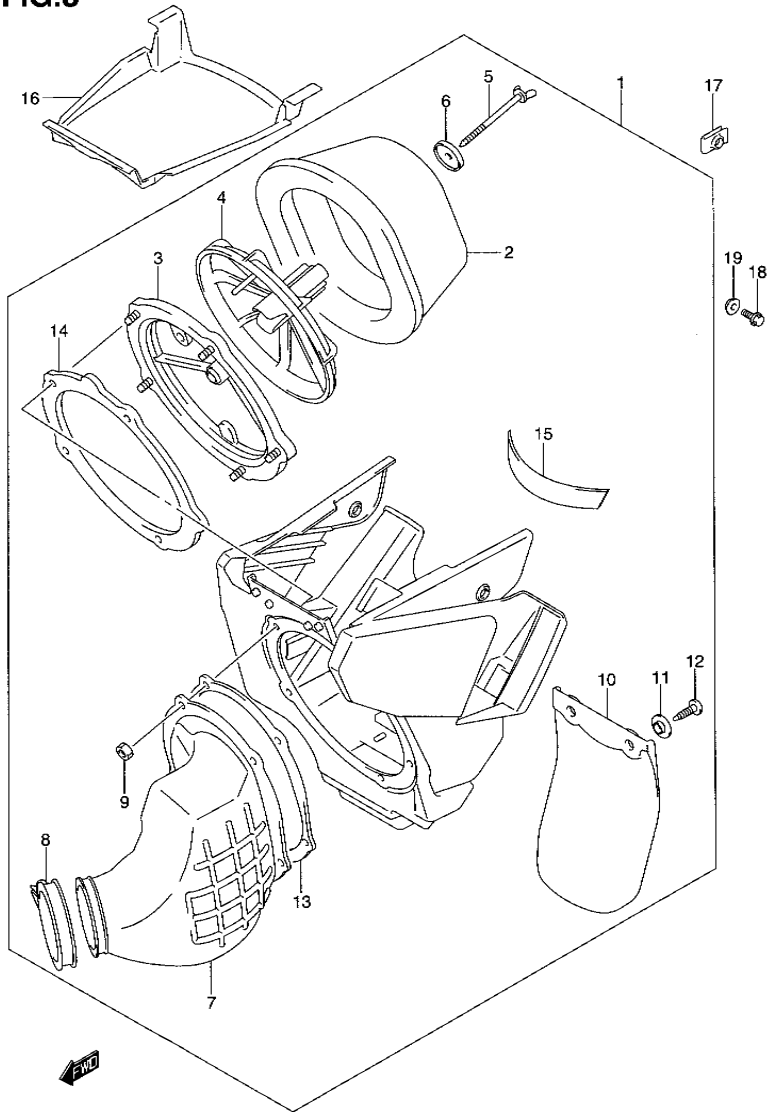


FIG.8 (B-12) AIR CLEANER

REF NO.	PART NO.	DESCRIPTION	QTY	REMARKS
1	13700-37F50	CLEANER ASSY, AIR	1	
2	13780-37F20	·FILTER ASSY	1	
3	13790-37F20	·BASE, FILTER	1	
4	13791-37F20	·HOLDER, FILTER	1	
5	13831-37F20	·BOLT, WING	1	
6	13792-13A01	·WASHER	1	
7	13881-37F30	·TUBE, OUTLET	1	
8	09402-70902	·CLAMP	1	
9	08310-00057	·NUT	5	
10	13738-36E01	·MUD GUARD	1	
11	13838-02B00	·COLLAR, MUD GUARD	2	
12	13831-35F00	·SCREW	2	
13	13795-37F20	·PLATE	1	
14	13796-37F20	·GASKET	1	
15	13736-37F50	·CUSHION	1	
16	13741-36F30	CAP, AIR CLEANER	1	
17	09148-06021	NUT, AIR CLEANER	3	
18	09103-06256	BOLT, AIR CLEANER	2	
19	09169-06053	WASHER, AIR CLEANER	2	

FIG.9

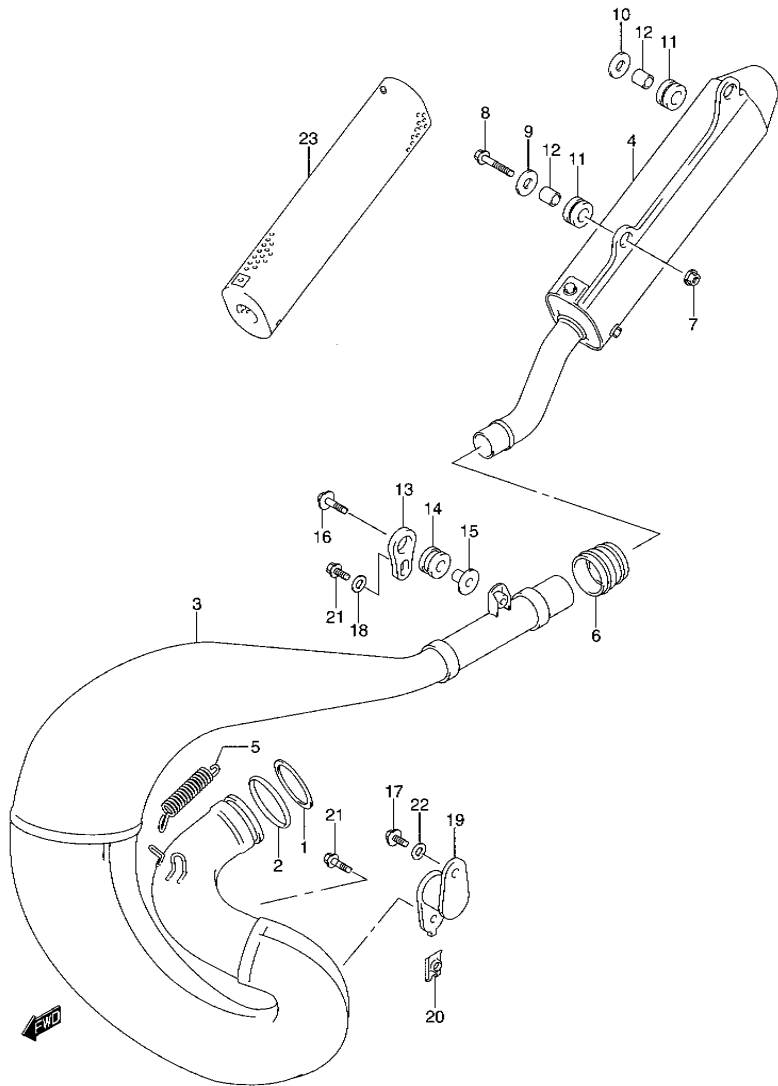


FIG.9 (B-13) MUFFLER

REF NO.	PART NO.	DESCRIPTION	QTY	REMARKS
1	14172-28C30	WASHER, EXHAUST PIPE	1	
2	14171-28C30	O RING, EXHAUST PIPE	1	
3	14310-37F21	MUFFLER, 1ST	1	
4	14330-37F50	MUFFLER, 2ND	1	
5	09443-10045	SPRING	2	
6	14771-28C02	CONNECTOR, 2ND MUFFLER	1	
7	08319-3106A	NUT	1	
8	09103-06251	BOLT	1	
9	09160-06114	WASHER (6.5X24X1.2)	1	
10	09160-06114	WASHER (6.5X24X1.2)	1	
11	09320-11015	CUSHION	2	
12	09180-06120	SPACER (6.5X11.5X12)	2	
13	14761-27C00	PLATE, MOUNTING	1	
14	14762-01B01	CUSHION	1	
15	14763-36E00	SPACER	1	
16	09116-06186	BOLT (L:25)	1	
17	09103-06233	BOLT (L:12)	1	
18	09160-06084	WASHER (6.5X18X1.6)	1	
19	14770-37F00	DAMPER, MUFFLER	1	
20	09148-06021	RETAINER, DAMPER	1	
21	09103-06234	BOLT (L:18)	2	
22	09160-06084	WASHER (6.5X18X1.6)	1	
23	14351-37F50	SILENCER, MUFFLER	1	OPT

FIG.10

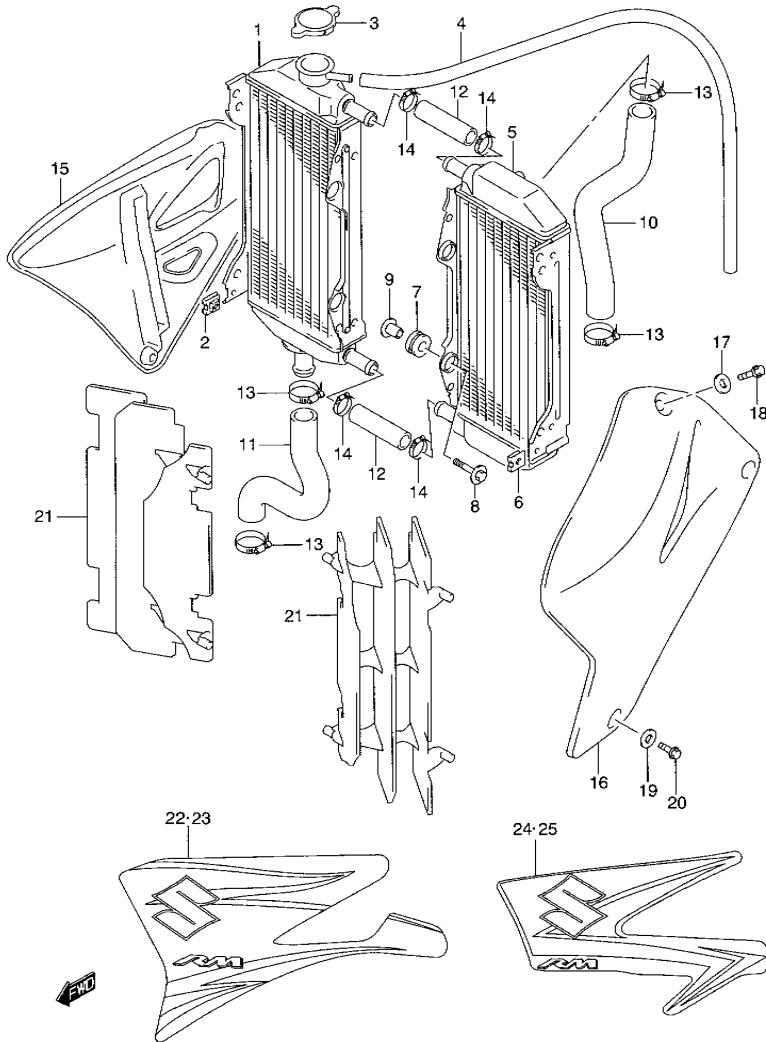


FIG.10 (B-14) RADIATOR

REF NO.	PART NO.	DESCRIPTION	QTY	REMARKS
1	17710-37F00	RADIATOR, RH	1	
2	09148-06015	·NUT	1	
3	17730-12C20	CAP, RADIATOR (1.1)	1	
4	09351-50803-00A	HOSE, OVER FLOW	1	L:1000→650
5	17720-37F00	RADIATOR, LH	1	
6	09148-06015	·NUT	1	
7	17787-19A00	CUSHION, SUPPORT	4	
8	09116-06186	BOLT	4	
9	09180-06243	SPACER	4	
10	17851-37F00	HOSE, INLET	1	
11	17852-37F00	HOSE, OUTLET	1	
12	17853-36F00	HOSE, JOINT	2	
13	09402-28513	CLAMP	4	
14	09402-22511	CLAMP	4	
15	17761-37F10-YU1	COVER, RADIATOR RH (YELLOW)	1	
16	17762-37F10-YU1	COVER, RADIATOR LH (YELLOW)	1	
17	69232-37F00	WASHER, RADIATOR COVER	4	
18	09103-06233	BOLT	4	
19	69232-37F00	WASHER, RADIATOR COVER	2	
20	09103-06233	BOLT	2	
21	17831-37F00	LOUVER, RADIATOR	2	
22	68660-37F60-DRA	TAPE, RADIATOR COVER RH	1	MODEL K7
23	68670-37F60-DRA	TAPE, RADIATOR COVER LH	1	MODEL K7
24	68660-37F70-EMA	TAPE, RADIATOR COVER RH	1	MODEL K8
25	68670-37F70-EMA	TAPE, RADIATOR COVER LH	1	MODEL K8

FIG.11

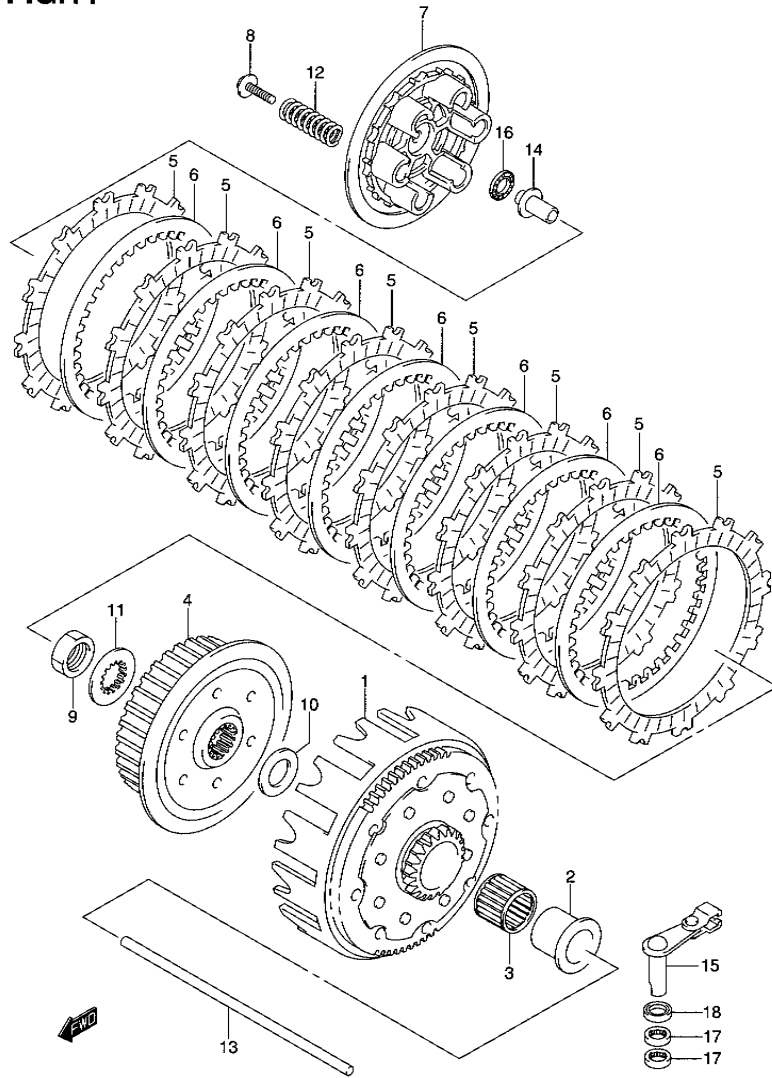


FIG.11 (C-2) CLUTCH

REF NO.	PART NO.	DESCRIPTION	QTY	REMARKS
1	21200-37F10	GEAR ASSY, PRIMARY DRIVEN	1	NT:63/21
2	21251-37E01	SPACER, PRIMARY DRIVEN GEAR	1	
3	09263-29009	BEARING, PRIMARY DRIVEN	1	29X34X27
4	21410-37F50	HUB, CLUTCH SLEEVE	1	
5	21441-37F50	PLATE, CLUTCH DRIVE	8	
6	21451-37F00	PLATE, CLUTCH DRIVEN	7	
7	21462-37F20	DISK, CLUTCH PRESSURE	1	
8	09116-05019	BOLT, CLUTCH (5X25)	6	
9	09140-18013	NUT, CLUTCH SLEEVE HUB	1	
10	09160-22082	WASHER, CLUTCH HUB THR	1	22.5X39
11	09167-22027	WASHER, CLUTCH HUB	1	
12	09440-18038	SPRING, CLUTCH	6	
13	23110-37F00	ROD, CLUTCH PUSH	1	
14	23121-37F00	PIECE, CLUTCH PUSH	1	
15	23200-37E02	CAMSHAFT, CLUTCH RELEASE	1	
16	09263-10002	BEARING, CLUTCH RELEASE	1	10.1X22X2.8
17	09263-12024	BEARING, NO.2	2	12X16X10
18	09285-12004	SEAL, CL RELEASE CAMSHAFT	1	12X19X5

FIG.12

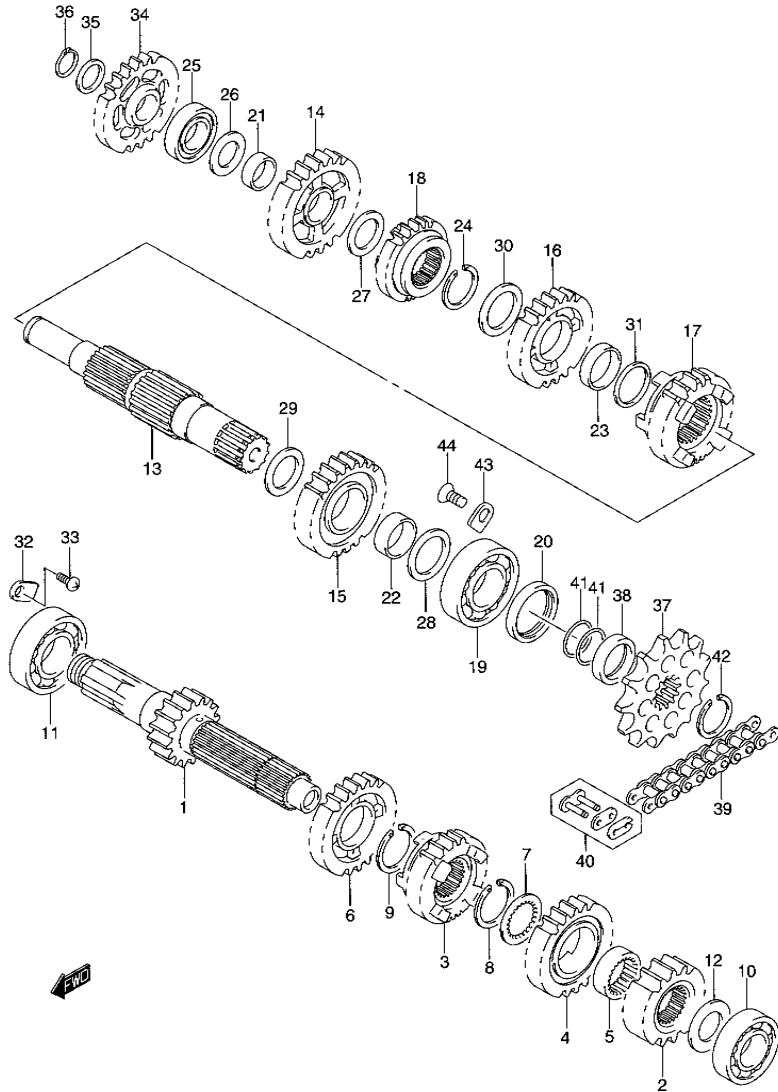


FIG.12 (C-3) TRANSMISSION

REF NO.	PART NO.	DESCRIPTION	Q'TY	REMARKS
1	24120-37F50	SHAFT, COUNTER (NT:15)	1	
2	24221-37F00	GEAR, 2ND DRIVE (NT:17)	1	
3	24231-37F11	GEAR, 3RD DRIVE (NT:19)	1	
4	24241-37E01	GEAR, 4TH DRIVE (NT:21)	1	
5	24242-37F00	BUSH, 4TH DRIVE GEAR	1	
6	24251-37E00	GEAR, 5TH DRIVE (NT:23)	1	
7	09167-25026	WASHER, 4TH (25X31X1.0)	1	
8	09380-25010	CIRCLIP, 4TH DRIVE	1	
9	09380-25010	CIRCLIP, 5TH DRIVE	1	
10	08143-62030	BEARING, CNTR LH	1	
11	08143-62057	BEARING, CNTR RH	1	
12	09181-17223	WASHER, 2ND (17X30X1.0)	1	
13	24131-37F20	SHAFT, DRIVE	1	
14	24311-37E00	GEAR, 1ST DRIVEN (NT:27)	1	
15	24321-37E02	GEAR, 2ND DRIVEN (NT:25)	1	
16	24331-37F02	GEAR, 3RD DRIVEN (NT:23)	1	
17	24341-37F20	GEAR, 4TH DRIVEN (NT:21)	1	
18	24351-37F20	GEAR, 5TH DRIVEN (NT:20)	1	
19	09262-22030	BEARING, DRIVE SHAFT, LH	1	22X56X15
20	09289-28012	SEAL, DRIVE (28X38X7.5)	1	
21	09300-20037	BUSH, 1ST DRIVEN GEAR	1	
22	09300-25031	BUSH, 2ND DRIVEN GEAR	1	
23	09300-25031	BUSH, 3RD DRIVEN GEAR	1	
24	09380-25010	CIRCLIP, 3RD DRIVEN	1	
25	09262-17023	BEARING, DRIVE SHAFT, RH	1	17X40X12
26	09181-17223	WASHER, 1ST (17X30X1.0)	1	
27	09181-20195	WASHER, 1ST (20X30X1.0)	1	
28	09181-22240	WASHER, 2ND (22X34X1.5)	1	
29	09181-25167	WASHER, 2ND (25X34X1.0)	1	

FIG.12

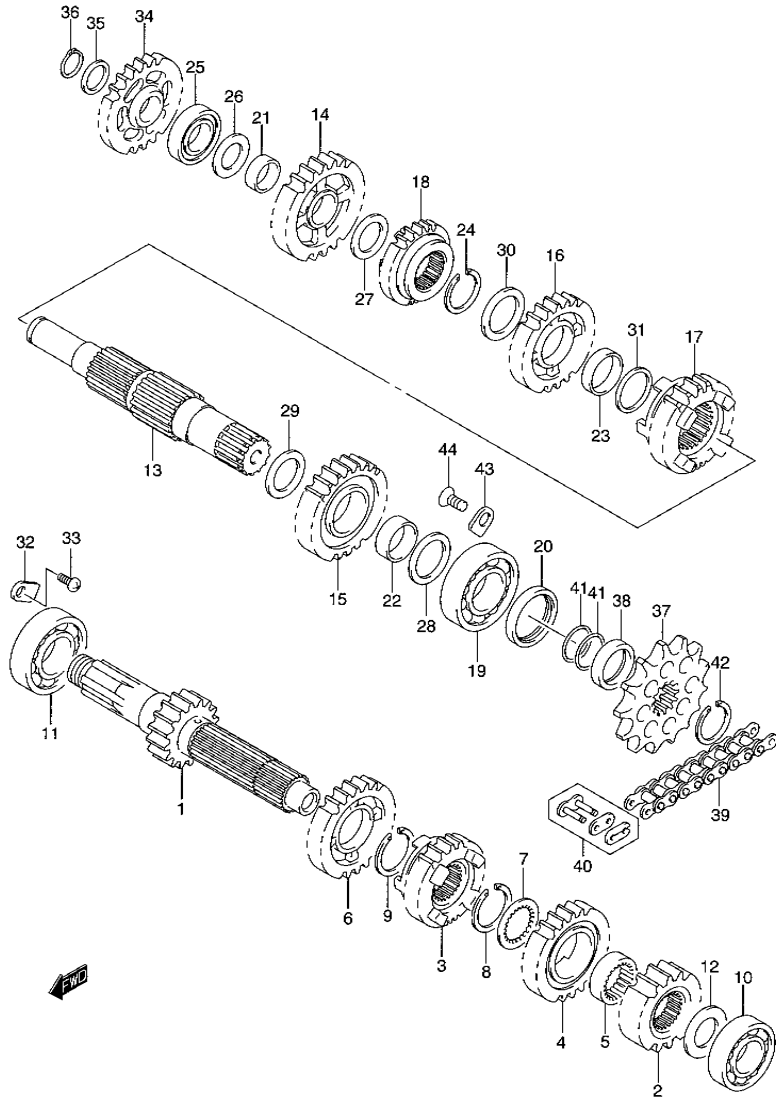


FIG.12 (C-4) TRANSMISSION

REF NO.	PART NO.	DESCRIPTION	Q'TY	REMARKS
30	09181-25167	WASHER, 3RD (25X34X1.0)	1	
31	08221-25305	WASHER, 3RD DRIVEN NO.2	1	
32	24741-21A00	RETAINER, CNTR SHAFT BRG	1	
33	02112-0612B	SCREW, CNTR RETAINER	1	
34	26260-37E01	GEAR, KICK STARTER (NT:27)	1	
35	09181-17130	WASHER, KICK (17X24X0.5)	1	
36	08331-3117A	CIRCLIP, KICK IDLE GR	1	
37	27511-37F00	SPROCKET, ENGINE (NT:13)	1	
38	27531-28C00	SPACER, ENGINE SPROCKET	1	
39	27600-43D01-114	CHAIN ASSY (DID520DMA2,114LE)	1	
40	27620-43D00	JOINT SET, CHAIN	1	OPT
41	09280-20006	O RING (D:1.9, ID:19.8)	2	
42	09380-22006	CIRCLIP, ENGINE SPROCKET	1	
43	24741-20A00	RETAINER, DRIVE SHAFT	2	
44	02122-0612A	SCREW	2	

FIG.13

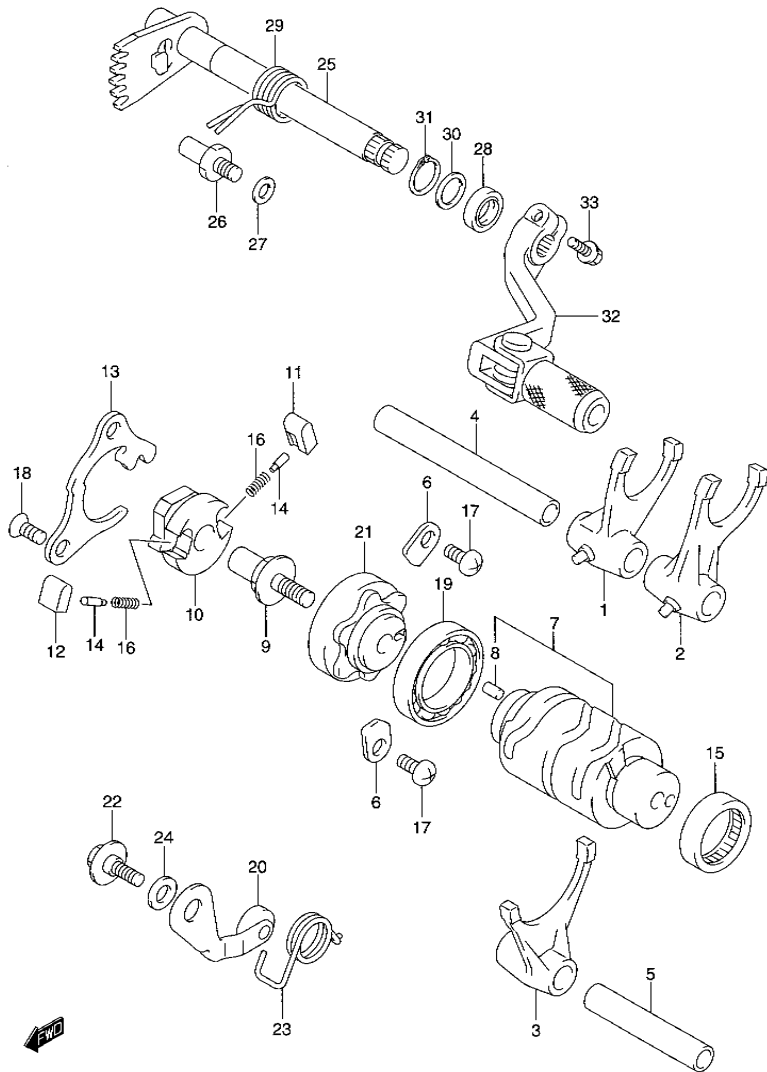


FIG.13 (C-5) GEAR SHIFTING

REF NO.	PART NO.	DESCRIPTION	QTY	REMARKS
1	25211-28C01	FORK, GEAR SHIFT, NO.1	1	
2	25221-37E10	FORK, GEAR SHIFT, NO.2	1	
3	25231-28C02	FORK, GEAR SHIFT, NO.3	1	
4	25411-37F20	SHAFT, GEAR FORK, NO.1	1	
5	25421-27C01	SHAFT, GEAR FORK, NO.2	1	
6	24741-21A00	RETAINER, SHIFT CAM BRG	2	
7	25310-37F00	CAM, GEAR SHIFT	1	
8	04221-04089	PIN, SHIFT CAM	1	
9	25313-37F00	PIN, SHIFT	1	
10	25322-37F01	SHIFTER, GEAR SHIFT CAM	1	
11	25323-34201	PAWL, GEAR SHIFT, NO.1	1	
12	25324-34201	PAWL, GEAR SHIFT, NO.2	1	
13	25331-37F01	LIFTER, GEAR SHIFT PAWL	1	
14	09209-05023	PIN, SHIFT PAWL	2	
15	09263-25018	BEARING, SHIFT CAM, LH	1	25X32X12
16	09440-04003	SPRING, SHIFT PAWL RETURN	2	
17	09125-06110	SCREW, SHIFT CAM BRG (6X12)	2	
18	09126-06011	SCREW, SHIFT PAWL (6X12)	2	
19	08140-69050	BEARING, SHIFT CAM, RH	1	
20	25350-37F30	STOPPER, SHIFT CAM	1	
21	25381-37F30	PLATE, SHIFT CAM STOPPER	1	
22	09111-06041	BOLT, SHIFT CAM STOPPER	1	6X14.3
23	25355-37F00	SPRING, SHIFT CAM	1	
24	08211-06121	WASHER, SHIFT CAM	1	
25	25510-37F10	SHAFT, GEAR SHIFT	1	
26	25671-37F10	STOPPER, GEAR SHIFT ARM	1	
27	09181-08139	WASHER, GEAR SHIFT ARM	1	8X14X1.0
28	09283-14006	SEAL, SHIFT SHAFT OIL	1	14X22X6
29	09444-20004	SPRING, SHIFT SHAFT RETURN	1	
30	09181-14139	WASHER, GEAR SHAFT	1	14X20X1.0
31	08331-31146	CIRCLIP, GEAR SHAFT	1	
32	25600-37F20	LEVER ASSY, GEAR SHIFT	1	
33	01547-06207	BOLT, GEAR SHIFT	1	

FIG.14

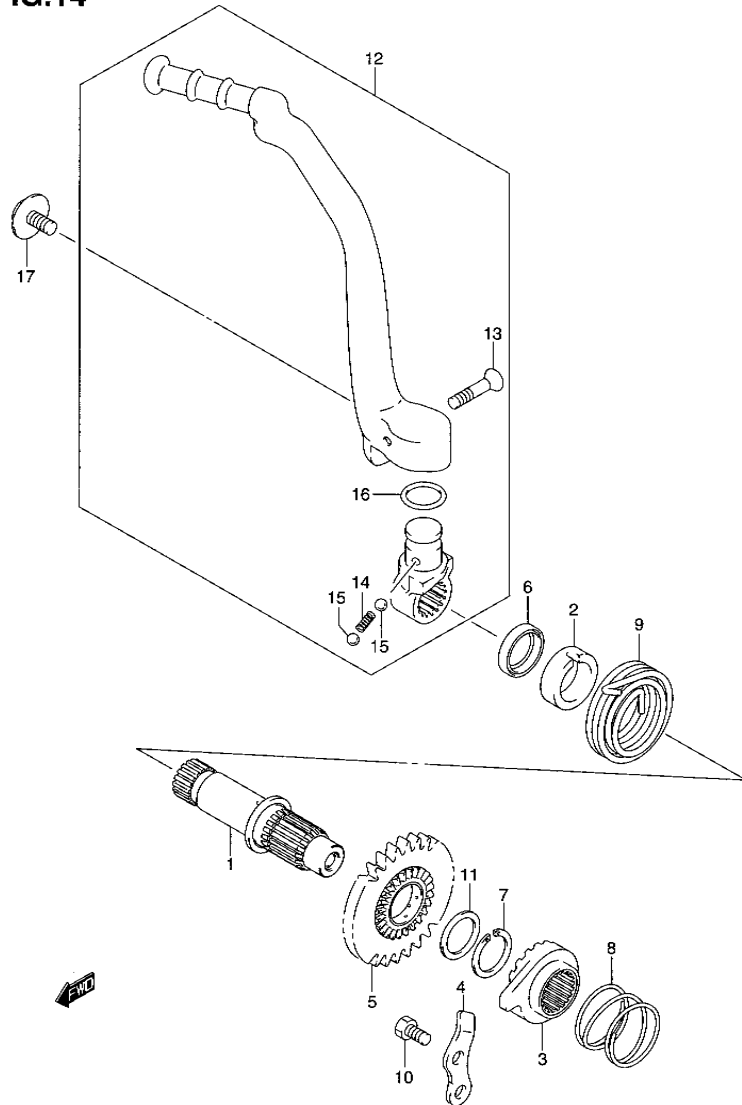


FIG.14 (C-6) KICK STARTER

REF NO.	PART NO.	DESCRIPTION	Q'TY	REMARKS
1	26211-37F00	SHAFT, KICK STARTER	1	
2	26221-01B01	GUIDE, KICK STARTER	1	
3	26231-37F00	STARTER, KICK	1	
4	26232-40200	GUIDE, KICK STARTER	1	
5	26240-37F00	GEAR, KICK STARTER DRIVE	1	NT:28
6	09283-20031	SEAL, KICK SHAFT OIL	1	20X27X5
7	09380-22006	CIRCLIP, KICK GEAR	1	
8	09440-32002	SPRING, KICK STOPPER	1	
9	09448-48012	SPRING, KICK STARTER SHAFT	1	
10	01500-0612B	BOLT, KICK STOPPER	1	
11	09181-22139	WASHER, KICK DRIVE GEAR	1	
12	26300-37F20	LEVER ASSY, KICK STARTER	1	
13	09127-06016	•SCREW, KICK STARTER LEVER	1	6X27.5
14	09440-05031	•SPRING, KICK STARTER LEVER	1	
15	06111-07004	•BALL, KICK STARTER LEVER	2	
16	26313-28E20	•O RING	1	
17	09103-08340	BOLT, KICK STARTER LEVER	1	

FIG.15

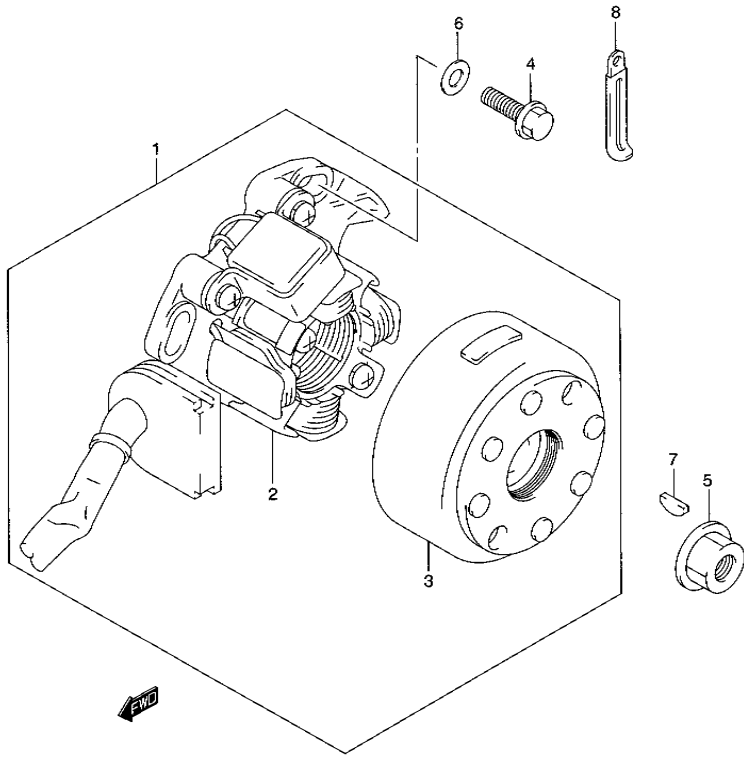


FIG.15 (C-7) MAGNETO

REF NO.	PART NO.	DESCRIPTION	QTY	REMARKS
1	32100-37F30	MAGNETO ASSY	1	
2	32101-37F30	·STATOR ASSY	1	
3	32102-37F20	·ROTOR	1	
4	01547-06207	BOLT, MAG STATOR	3	
5	08316-1012B	NUT, MAG ROTOR	1	
6	08322-0106B	WASHER	3	
7	08341-31039	KEY, MAG	1	
8	09404-06433	CLAMP (L.80)	1	

FIG.16

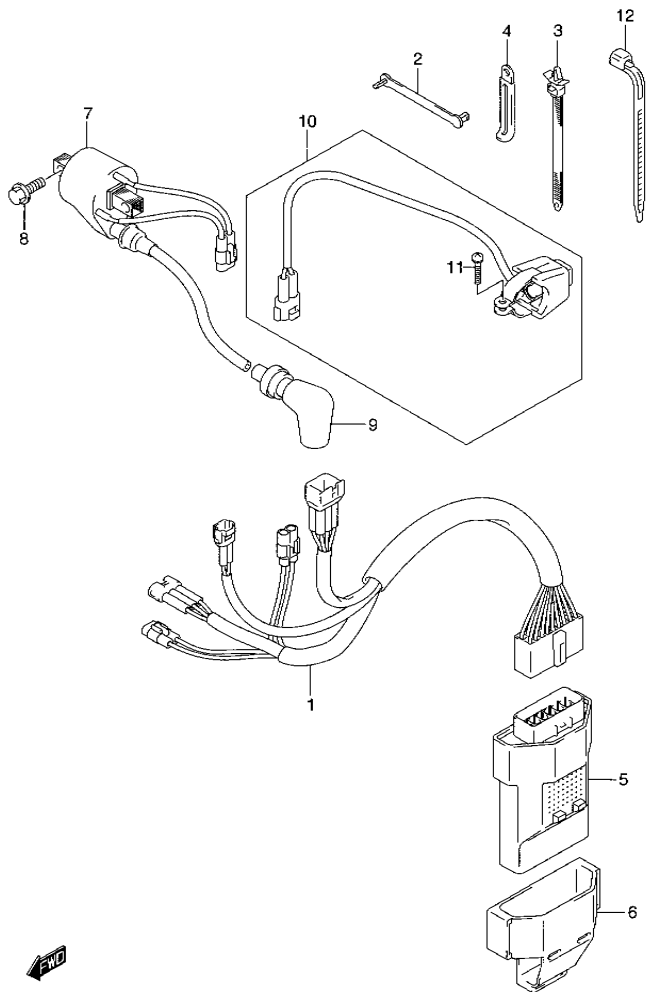


FIG.16 (C-8) ELECTRICAL

REF NO.	PART NO.	DESCRIPTION	QTY	REMARKS
1	36610-37F30	HARNESS, WIRING	1	
2	36651-48E00	CLAMP	1	
3	09407-11402	CLAMP (L:90)	1	
4	09404-06429	CLAMP (L:45)	1	
5	32900-37F50	CDI, UNIT	1	
6	32980-37F00	CUSHION CDI	1	
7	33410-37F00	COIL ASSY, IGNITION	1	
8	09103-06234	BOLT, IGNITION (6X16)	2	
9	33510-20A02	CAP, SPARK PLUG	1	
10	37820-36E00	SWITCH ASSY, ENGINE STOP	1	
11	02112-33165	SCREW	1	
12-1	09407-11401	CLAMP (L:95)	1	
12-2	09407-14403	CLAMP (L:125)	1	

FIG.17

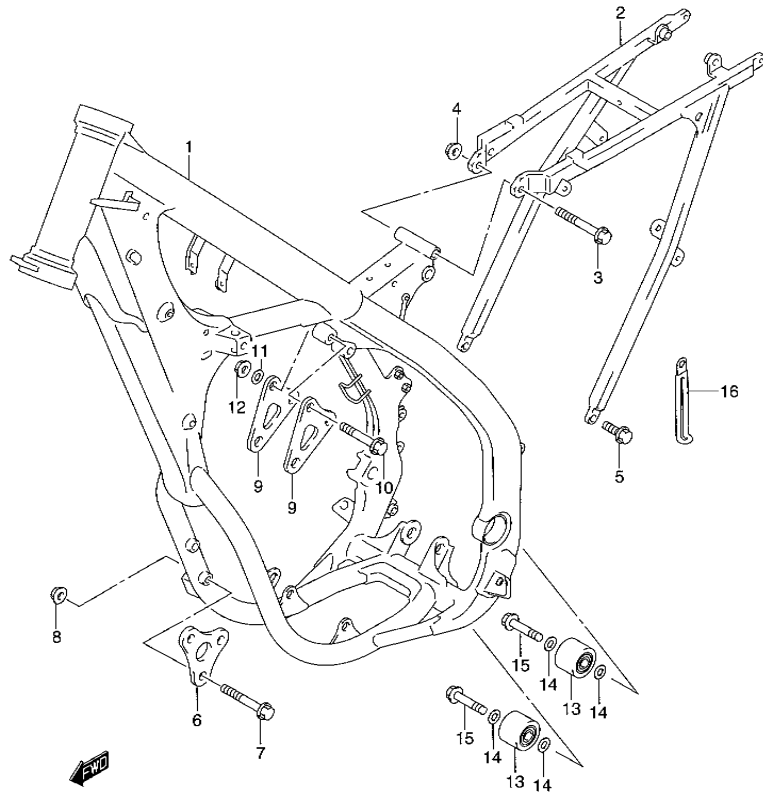


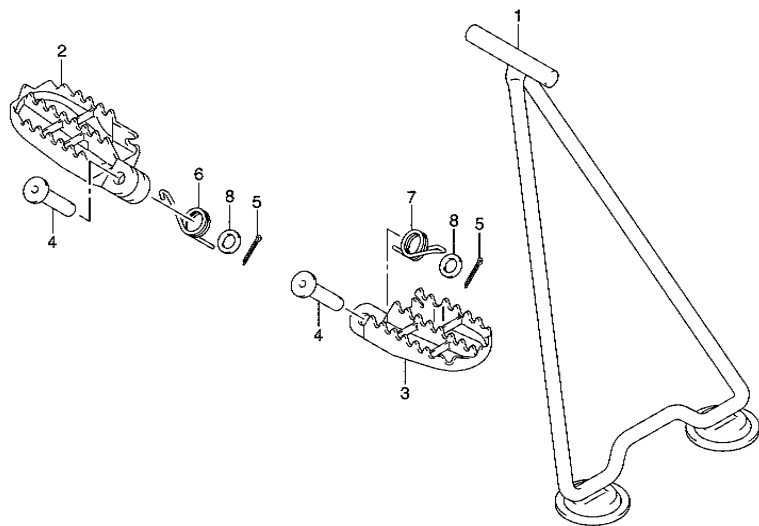
FIG.17 (D-2) FRAME

REF NO.	PART NO.	DESCRIPTION	QTY	REMARKS
1	41100-37F60-YU8	FRAME (GRAY)	1	
2	41200-37F30	RAIL, SEAT	1	
3	09103-08070	BOLT, UPPER	1	
4	08319-3108A	NUT	1	
5	09104-08036	BOLT, LOWER	2	
6	41991-37F10	PLATE, ENGINE MOUNT FRONT	1	
7	09103-08170	BOLT	2	
8	09159-08067	NUT	2	
9	41993-37F20	PLATE, ENGINE MOUNT UPPER	2	
10	09103-08043	BOLT	2	
11	09164-08011	WASHER	2	
12	09159-08067	NUT	2	
13	43910-37F00	ROLLER, CHAIN CONTROL	2	
14	09181-08111	WASHER	4	
15	09103-08083	BOLT	2	
16	09404-08206	CLAMP, LOWER	1	

FIG.18

FIG.18 (D-3) STAND / FOOTREST

REF NO.	PART NO.	DESCRIPTION	QTY	REMARKS
1	42310-36E40	STAND, PROP	1	
2	43551-37F10	FOOTREST, RH	1	
3	43561-37F10	FOOTREST, LH	1	
4	09200-10022	PIN	2	
5	04111-2520A	COTTER PIN	2	
6	09448-21007	SPRING, RH	1	
7	09448-21008	SPRING, LH	1	
8	08322-0110B	WASHER	2	



4

FIG.19

FIG.19 (D-4) REAR BRAKE

REF NO.	PART NO.	DESCRIPTION	QTY	REMARKS
1	43100-37F20	PEDAL, BRAKE	1	
2	09284-15006	DUST SEAL	2	
3	43142-37F00	SHAFT	1	
4	04111-2020A	COTTER PIN	1	
5	09443-13036	SPRING	1	
6	43145-37F00	PROTECTOR, SPRING	1	

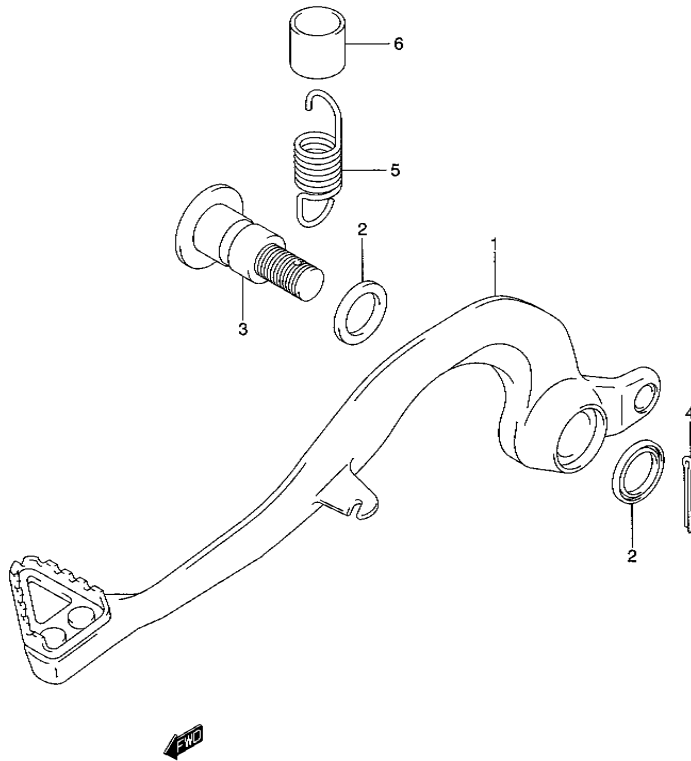


FIG.20

4

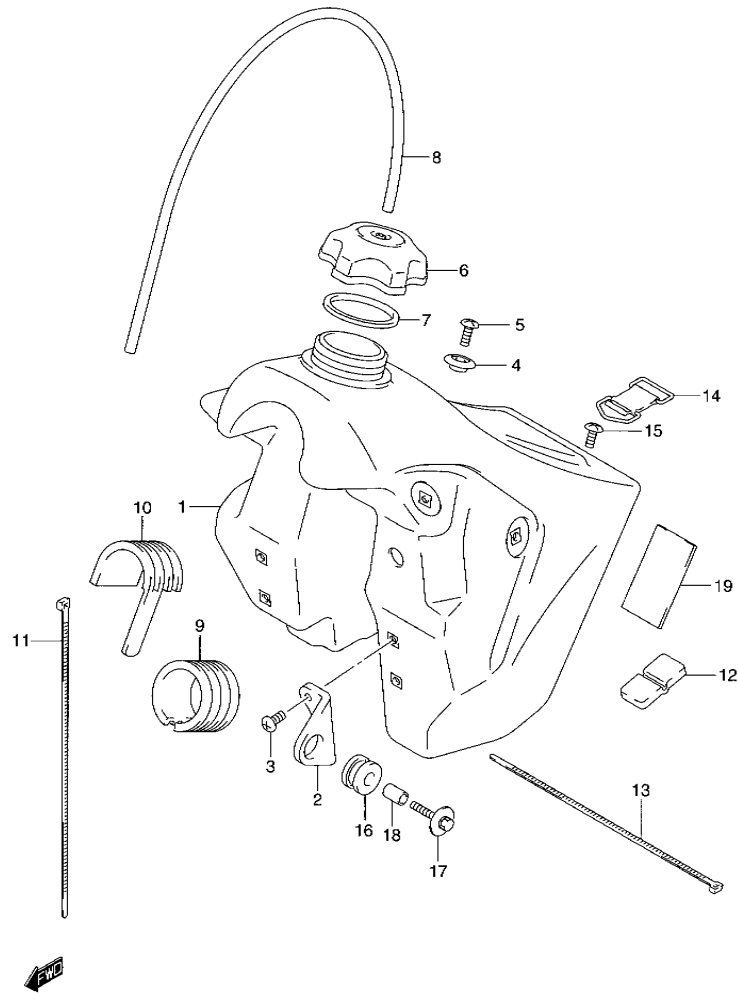


FIG.20 (D-5) FUEL TANK

REF NO.	PART NO.	DESCRIPTION	Q'TY	REMARKS
1	44110-37F21-YU1	TANK, FUEL (YELLOW)	1	
2	44131-27C01	BRACKET, FRONT	2	
3	09103-06280	BOLT, FRONT	4	
4	44132-37F10	HOOK, SEAT FRONT	1	
5	02122-0620B	SCREW, HOOK	1	
6	44210-37F00	CAP, FUEL TANK	1	
7	44248-27C00	GASKET	1	
8	09352-50823-600	HOSE, BREATHER (L:600→350)	1	
9	44541-26C00	CUSHION	1	
10	44541-37F00	CUSHION	1	
11	09407-30402	CLAMP	2	
12	44542-37F00	CUSHION, REAR	1	
13	09407-25402	CLAMP, REAR	1	
14	44560-27C00	BAND, REAR	1	
15	09139-06134	SCREW	1	
16	14762-01B01	CUSHION, FRONT	2	
17	09116-06195	BOLT, FRONT	2	
18	09180-06268	SPACER	2	
19	33652-19F00	CUSHION, SIDE	2	

FIG.21

FIG.21 (D-6) FUEL COCK

REF NO.	PART NO.	DESCRIPTION	QTY	REMARKS
1	44300-37F10	COCK ASSY, FUEL	1	
2	09103-06234	BOLT	2	
3	44421-37F00	HOSE, FUEL	1	
4	09401-11101	CLIP	2	

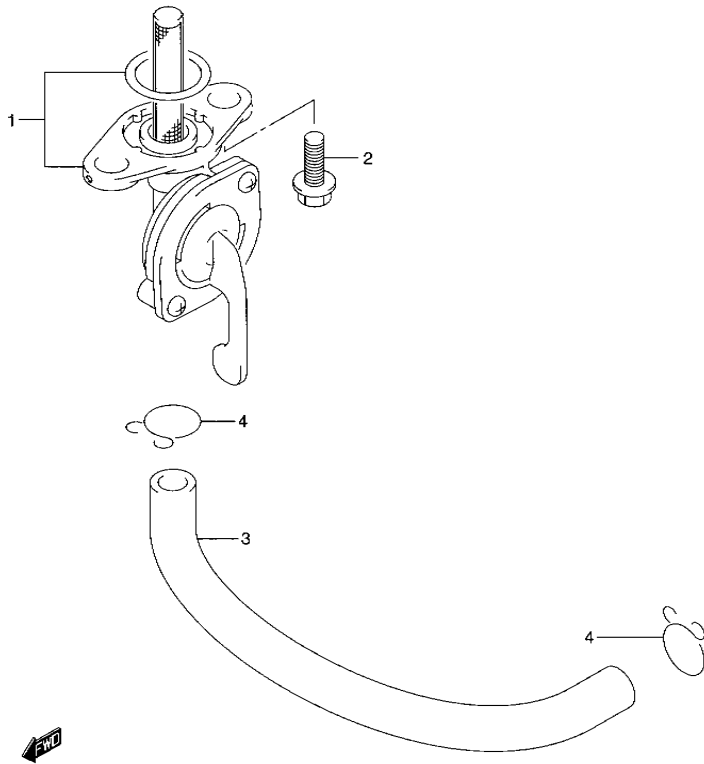
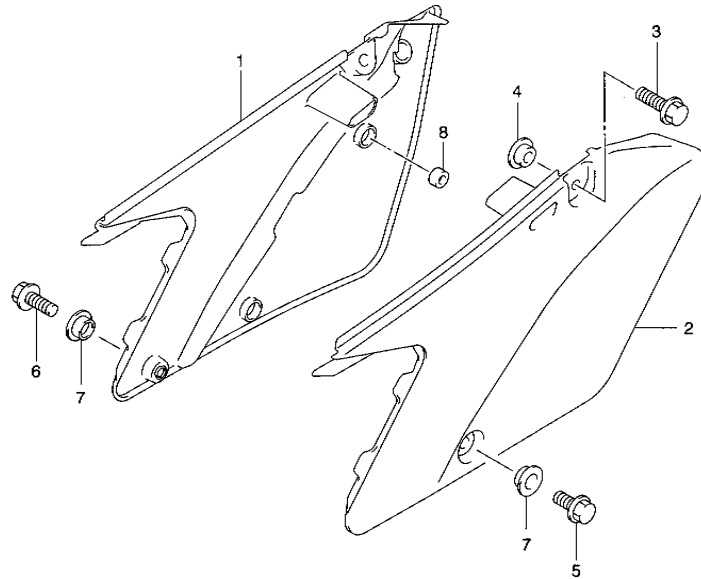


FIG.22

FIG.22 (D-7) FRAME COVER

REF NO.	PART NO.	DESCRIPTION	Q'TY	REMARKS
1	47111-37F50-30H	COVER, FRAME RH (WHITE)	1	
2	47211-36F20-30H	COVER, FRAME LH (WHITE)	1	
3	09116-06188	BOLT, SEAT	2	
4	53112-37F01	WASHER, SEAT	2	
5	09103-06233	BOLT, FRONT LH	1	
6	09103-06234	BOLT, FRONT RH	1	
7	69232-37F01	WASHER, FRONT	2	
8	47161-37F00	CUSHION, RH	1	



4

FIG.23

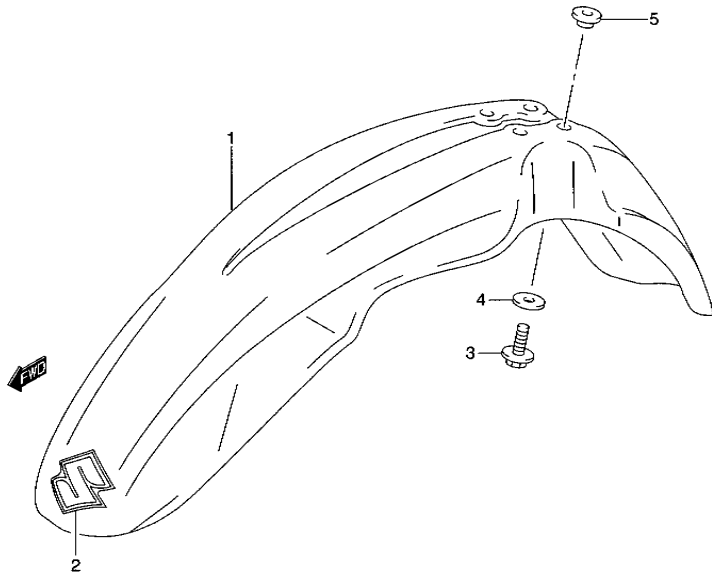
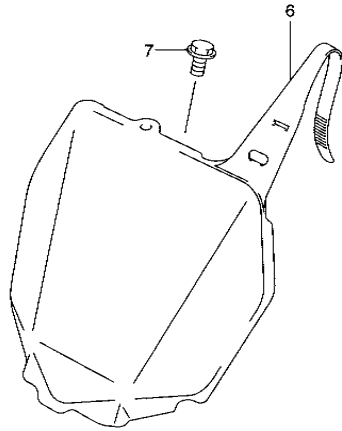


FIG.23 (D-8) FRONT FENDER

REF NO.	PART NO.	DESCRIPTION	QTY	REMARKS
1	53111-37F01-YU1	FENDER, FRONT (YELLOW)	1	
2	68151-37F10-CFM	EMBLEM, "S"	1	
3	01547-0616B	BOLT	4	
4	09160-06136	WASHER, LOWER	4	
5	09169-06078	WASHER	4	
6	94911-37F02-30H	PLATE, FRONT NUMBER (WHITE)	1	
7	09103-06233	BOLT	1	

FIG.24

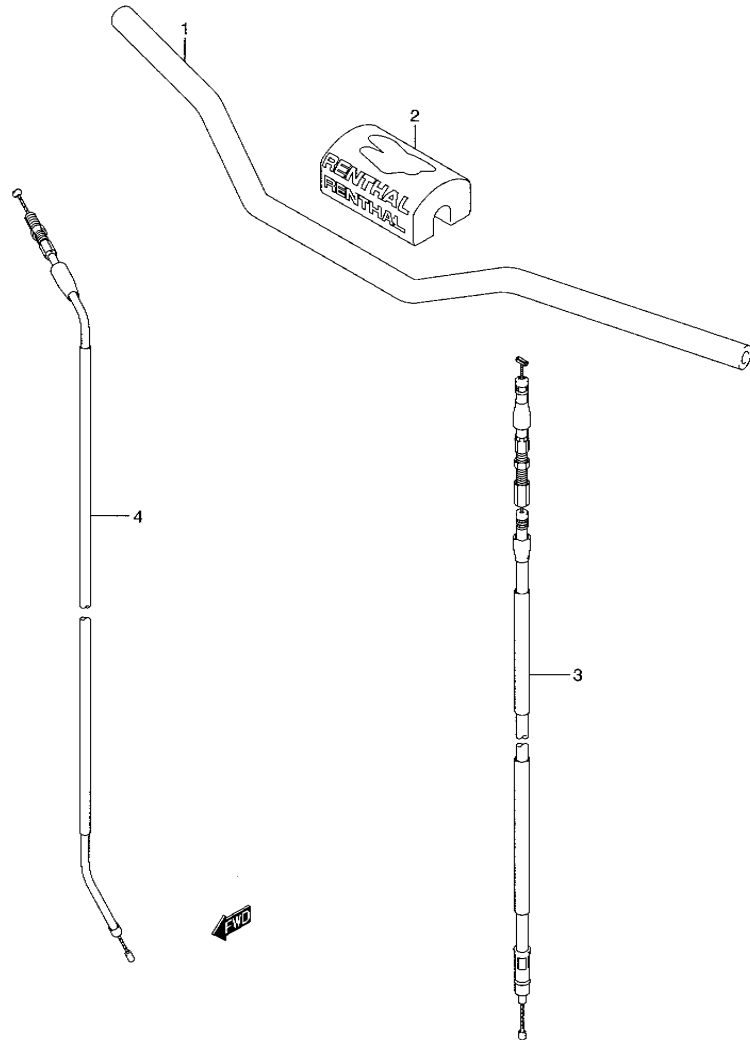


FIG.24 (D-9) HANDLEBAR

REF NO.	PART NO.	DESCRIPTION	Q'TY	REMARKS
1	56111-35G00	HANDLEBAR ASSY	1	
2	56170-35G10	PAD SET, CROSS BAR	1	
3	58210-37F11	CABLE ASSY, CLUTCH	1	
4	58300-37F20	CABLE ASSY, THROTTLE	1	

FIG.25

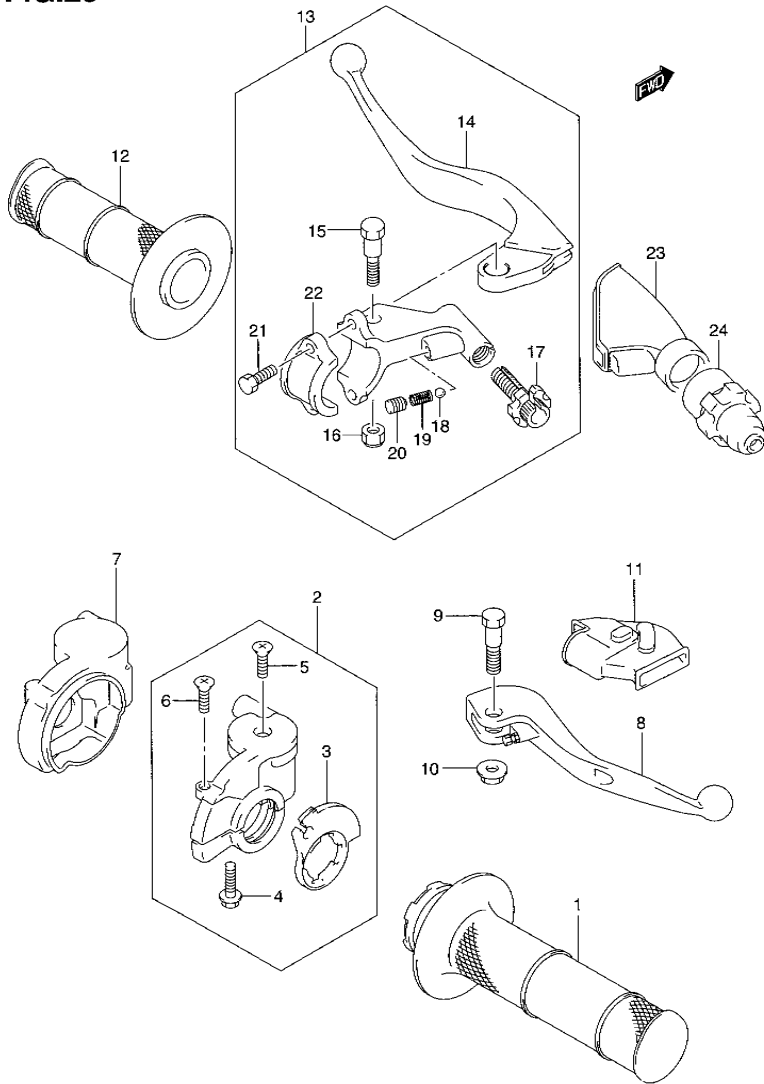


FIG.25 (D-10) HANDLE LEVER

REF NO.	PART NO.	DESCRIPTION	QTY	REMARKS
1	57110-36E01	GRIP, THROTTLE	1	
2	57100-28E01	CASE ASSY, THROTTLE	1	
3	57114-28E00	·ROTOR	1	
4	01547-06253	·BOLT	2	
5	02122-04103	·SCREW	1	
6	02122-04163	·SCREW	1	
7	57129-28E01	COVER, THROTTLE CASE	1	
8	57310-37F00	LEVER, BRAKE	1	
9	57431-14500	BOLT	1	
10	08316-10063	NUT	1	
11	57343-35G00	COVER, BRAKE LEVER	1	
12	57211-36E01	GRIP, LH	1	
13	57500-37F11	LEVER ASSY, CLUTCH	1	
14	57621-28C40	·LEVER, CLUTCH	1	
15	57431-21D11	·BOLT	1	
16	08319-21068	·NUT	1	
17	57441-37F00	·ADJUSTER, CABLE	1	
18	06111-06003	·BALL	1	
19	09440-04003	·SPRING	1	
20	09134-06009	·BOLT	1	
21	09103-06234	·BOLT	2	
22	57512-37F00	·BRACKET, HOLDER	1	
23	57341-37F00	COVER, CLUTCH LEVER	1	
24	57342-37F00	COVER, ADJUSTER	1	

FIG.26

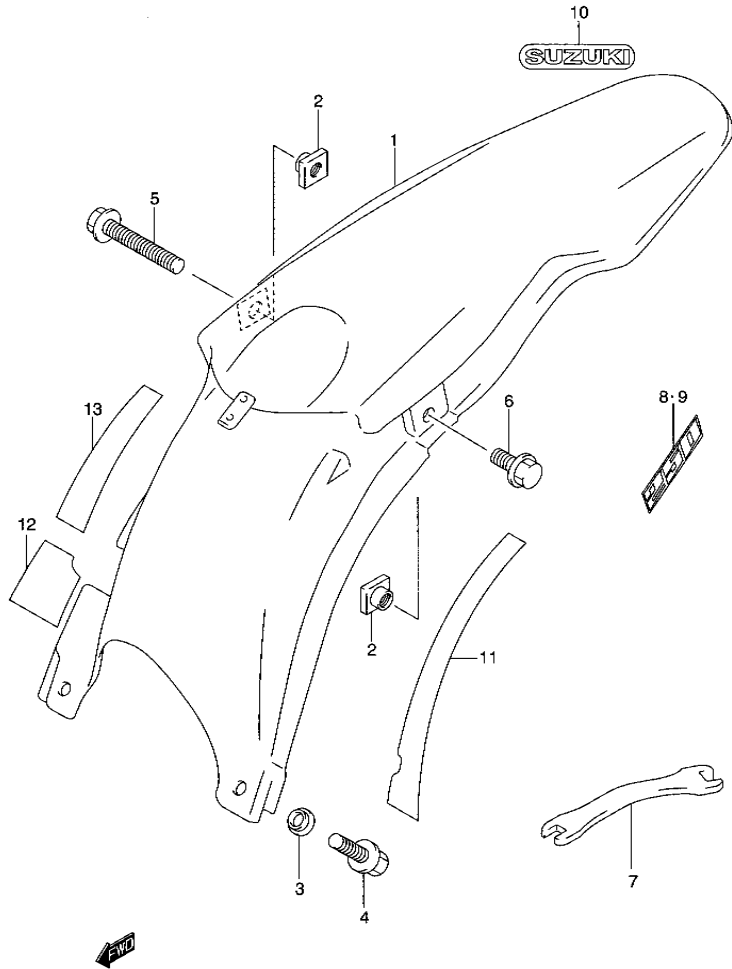


FIG.26 (D-11) REAR FENDER

REF NO.	PART NO.	DESCRIPTION	Q'TY	REMARKS
1	63111-37F00-YU1	FENDER, REAR (YELLOW)	1	
2	09152-06024	NUT, REAR FENDER	2	
3	69232-37F01	WASHER	2	
4	09103-06235	BOLT, FRONT	2	
5	09103-06252	BOLT, RH	1	
6	09103-06234	BOLT, LH	1	
7	09813-00134	OPEN SPANNER (6.4X6.8)	1	
8	68175-37F20-GY8	TAPE, REAR FENDER RH	1	
9	68176-37F20-GY8	TAPE, REAR FENDER LH	1	
10	68721-13A00-GY8	EMBLEM, "SUZUKI"	1	
11	63114-37F00	CUSHION, NO.1	1	
12	63114-37F10	CUSHION, NO.2	1	
13	63114-37F20	CUSHION, NO.3	1	

4

FIG.27

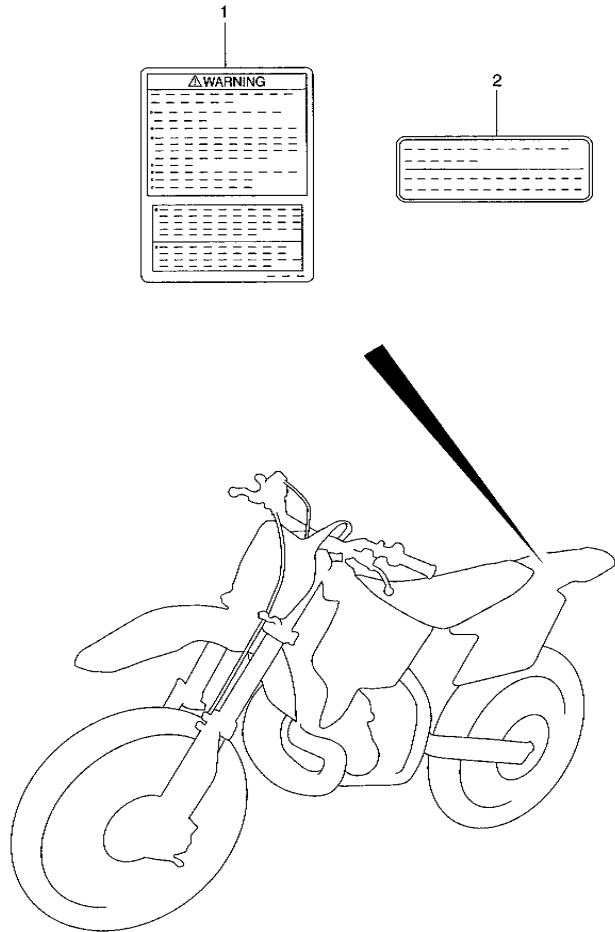


FIG.27 (D-12) LABEL

REF NO.	PART NO.	DESCRIPTION	QTY	REMARKS
1-1	68921-37F70	LABEL, WARNING (ENGLISH)	1	
1-2	68921-37F80	LABEL, WARNING (FRENCH)	1	
2	68367-37F00	LABEL, WARNING	1	
3-1	99011-37F56-01A	MANUAL, OWNER'S (ENGLISH)	1	MODEL K7
3-2	99011-37F56-01E	MANUAL, OWNER'S (ITALIAN)	1	MODEL K7
3-3	99011-37F56-01H	MANUAL, OWNER'S (DUTCH)	1	MODEL K7
3-4	99011-37F56-01K	MANUAL, OWNER'S (GERMAN)	1	MODEL K7
3-5	99011-37F56-029	MANUAL, OWNER'S (SPANISH)	1	MODEL K7
3-6	99011-37F56-04F	MANUAL, OWNER'S (FRENCH)	1	MODEL K7
3-7	99011-37F57-01A	MANUAL, OWNER'S (ENGLISH)	1	MODEL K8
3-8	99011-37F57-01E	MANUAL, OWNER'S (ITALIAN)	1	MODEL K8
3-9	99011-37F57-01H	MANUAL, OWNER'S (DUTCH)	1	MODEL K8
3-10	99011-37F57-01K	MANUAL, OWNER'S (GERMAN)	1	MODEL K8
3-11	99011-37F57-029	MANUAL, OWNER'S (SPANISH)	1	MODEL K8
3-12	99011-37F57-04F	MANUAL, OWNER'S (FRENCH)	1	MODEL K8 DRAWING NOT SHOWN

FIG.28

FIG.28 (E-2) SEAT

REF NO.	PART NO.	DESCRIPTION	QTY	REMARKS
1-1	45100-37F60-DNA	SEAT SET	1	MODEL K7
1-2	45100-37F60-ELU	SEAT SET	1	MODEL K8

4

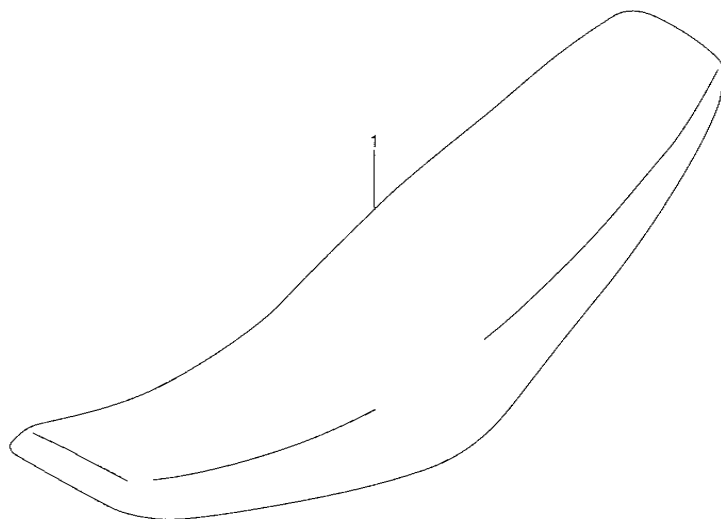


FIG.29

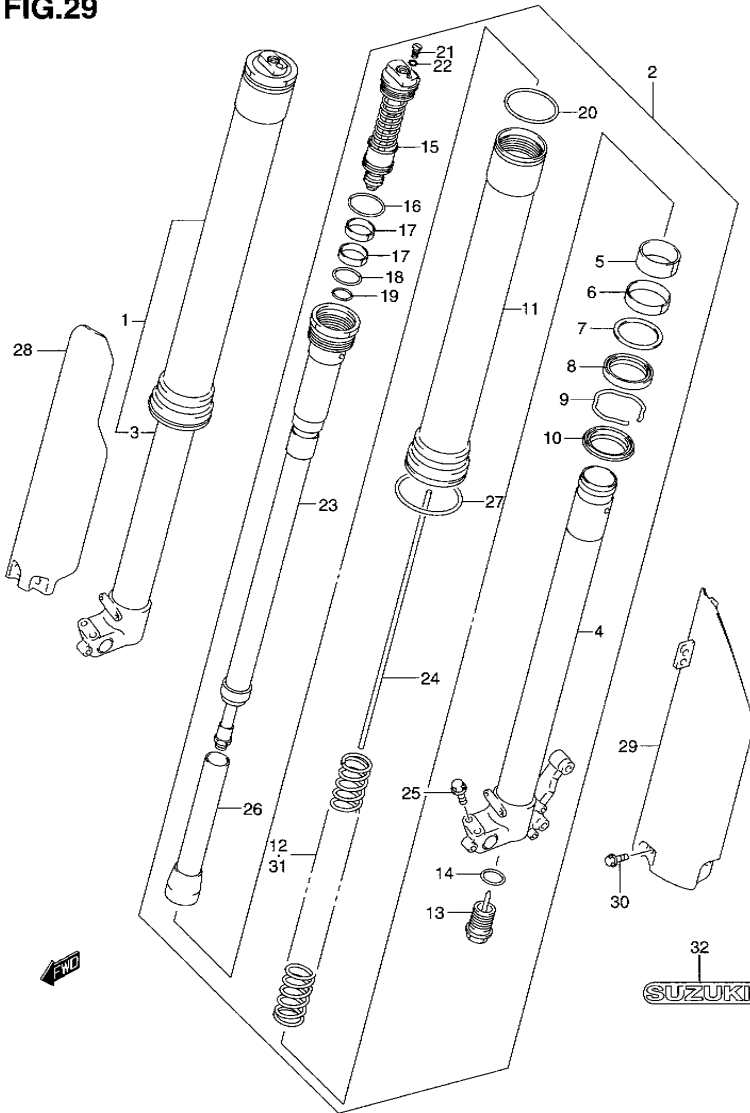


FIG.29 (E-3) FRONT DAMPER

REF NO.	PART NO.	DESCRIPTION	QTY	REMARKS
1	51103-37FC0	DAMPER ASSY, FRONT FORK RH	1	
2	51104-37FC0	DAMPER ASSY, FRONT FORK LH	1	
3	51110-37FC0	·TUBE, INNER RH	1	
4	51120-37FC0	·TUBE, INNER LH	1	
5	51121-36F00	·BUSH, GUIDE	2	
6	51167-36F00	·BUSH, GUIDE	2	
7	51158-36F00	·SPACER, SEAL	2	
8	51153-37F80	·SEAL, OIL	2	
9	51156-27C40	·RING, OIL SEAL STOPPER	2	
10	51173-37F80	·SEAL, DUST	2	
11	51130-37FC0	·TUBE, OUTER	2	
12	51171-37FC0	·SPRING, FRONT (K=0.44)	2	
13	51170-37FC0	·BOLT, CENTER	2	
14	51177-36E20	··O RING	2	
15	51351-37FC0	·BOLT, FORK	2	
16	51117-37F80	··O RING	2	
17	51123-28E30	··BUSH, FORK BOLT SLIDE	4	
18	51174-36E40	··O RING	2	
19	51175-37F80	··O RING	2	
20	51118-37F80	··O RING	2	
21	51357-36F20	··BOLT, PLUG	2	
22	51358-28E30	····O RING	2	
23	51190-37FC0	·ROD, DAMPER	2	
24	51191-36F40	·ROD, PUSH	2	
25	51328-37F80	·BOLT	4	
26	51198-37F80	·COLLAR, SPRING	2	
27	51211-37FC0	·RING, STOPPER	2	
28	51501-37F70	PROTECTOR, RH	1	
29	51511-37F70	PROTECTOR, LH	1	
30	09103-06256	BOLT	6	
31-1	51171-37FE0	SPRING, FRONT (HARD K=0.46)	2	OPT
31-2	51171-37FD0	SPRING, FRONT (SOFT K=0.42)	2	OPT
32	68661-29F00-DPZ	EMBLWEM, "SUZUKI"	2	

FIG.30

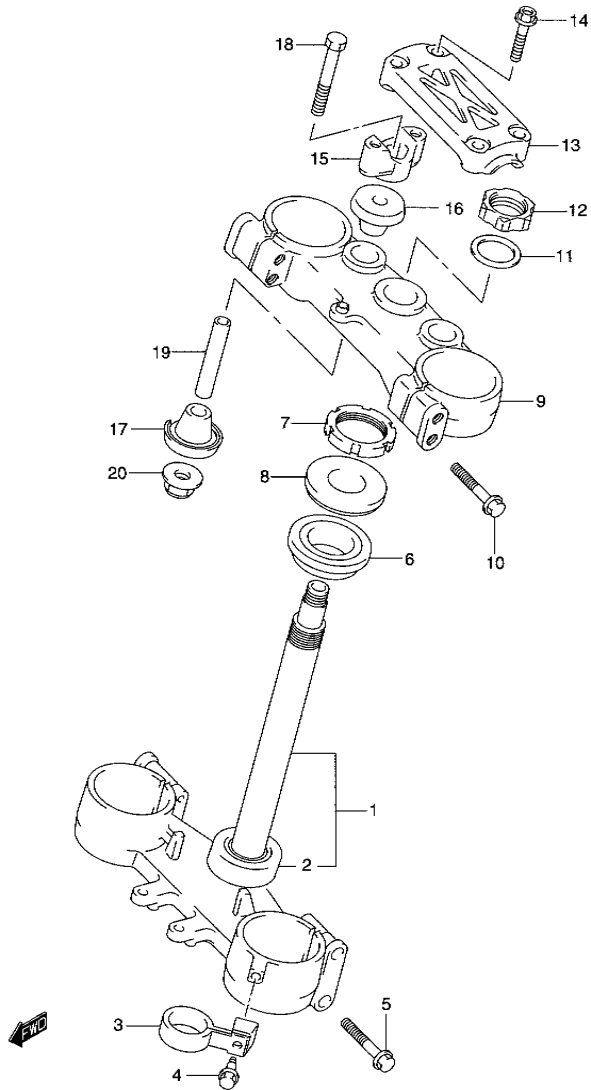


FIG.30 (E-4) STEERING STEM

REF NO.	PART NO.	DESCRIPTION	Q'TY	REMARKS
1	51410-37F80	STEM, STEERING	1	
2	09265-30014	BEARING (30X52X16)	1	
3	58621-37F80	GUIDE, BRAKE HOSE	1	
4	09111-06087	BOLT, GUIDE	1	
5	51328-37F80	BOLT, STEM	4	
6	09265-30022	BEARING	1	
7	51631-37F00	NUT, STEERING	1	
8	51643-37F00	SEAL, STEERING UPPER DUST	1	
9	51310-37F70	HEAD, STEERING STEM	1	
10	51328-37F80	BOLT, STEM HEAD	4	
11	51356-29E00	WASHER, STEM HEAD	1	
12	51353-37F70	NUT, STEM HEAD	1	
13	56211-35G00	HOLDER, HANDLE	1	
14	51321-37F90	BOLT, HANDLE HOLDER	4	
15	56221-35G00	HOLDER, HANDLE LOWER	2	
16	56241-42AE0	DAMPER, UPPER	2	
17	56242-28C60	DAMPER, LOWER	2	
18	56321-35G00	BOLT	2	
19	56243-42A00	SPACER	2	
20	08319-31107	NUT	2	

4

FIG.31

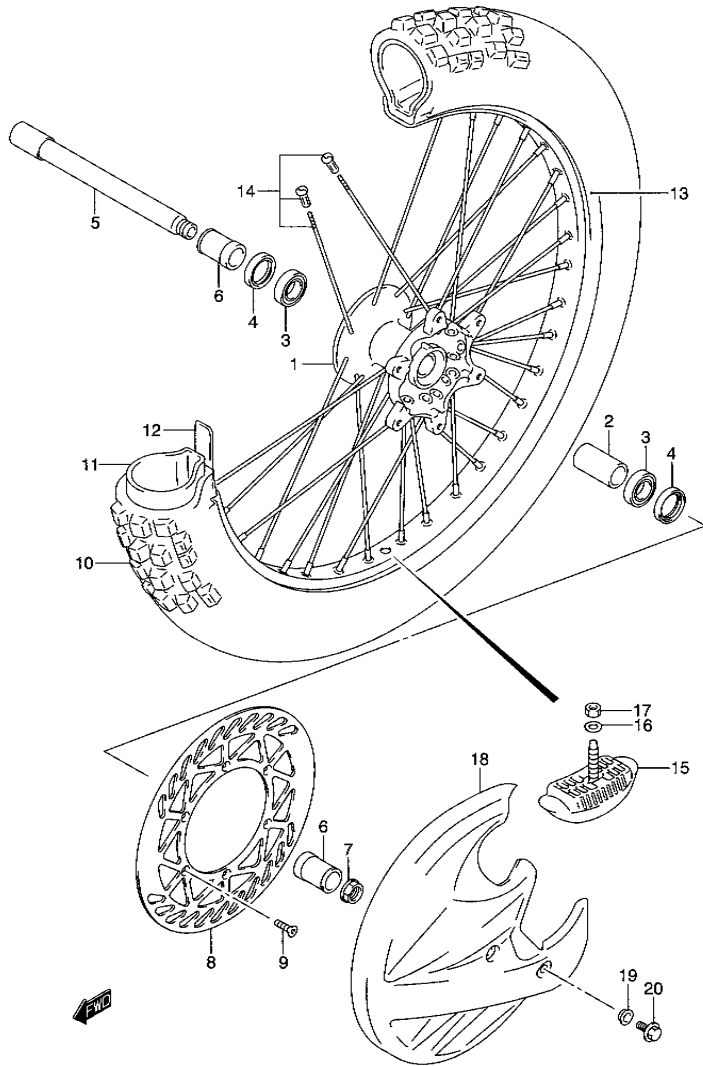


FIG.31 (E-5) FRONT WHEEL

REF NO.	PART NO.	DESCRIPTION	QTY	REMARKS
1	54111-36E00	HUB, FRONT WHEEL	1	
2	54731-36E00	SPACER, FRONT HUB (20.5X27.3X50)	1	
3	08130-69047	BEARING	2	
4	09283-28023	SEAL, FRONT HUB (28X37X7)	2	
5	54711-37F00	AXLE, FRONT	1	
6	54741-37F01	SPACER, AXLE (L:41)	2	
7	09159-18016	NUT	1	
8	59220-37F20	DISC, FRONT BRAKE	1	
9	09120-06014	SCREW	6	
10	55110-37F40	TIRE, FRONT (80/100-21) (BRIDGESTONE)	1	E19
11	55200-16510	TUBE ASSY, WHEEL INNER	1	
12	55261-28330	PROTECTOR, INNER TUBE	1	
13-1	55311-28C01	RIM, FRONT WHEEL (1.60X21)	1	
13-2	55311-37F00	RIM, FRONT WHEEL (1.85X20)	1	OPT
14-1	55320-37F10	SPOKE SET, FRONT WHEEL	1	
14-2	55320-37F00	SPOKE SET, FRONT WHEEL (20 INCH)	1	OPT
15	65270-14300	STOPPER, BEAD	1	
16	08322-0108B	WASHER	1	
17	08310-0008B	NUT	1	
18	59231-36E20-YU1	COVER, FRONT BRAKE DISC	1	OPT
19	09169-06053	WASHER	2	OPT
20	09103-06233	BOLT	2	OPT

FIG.32

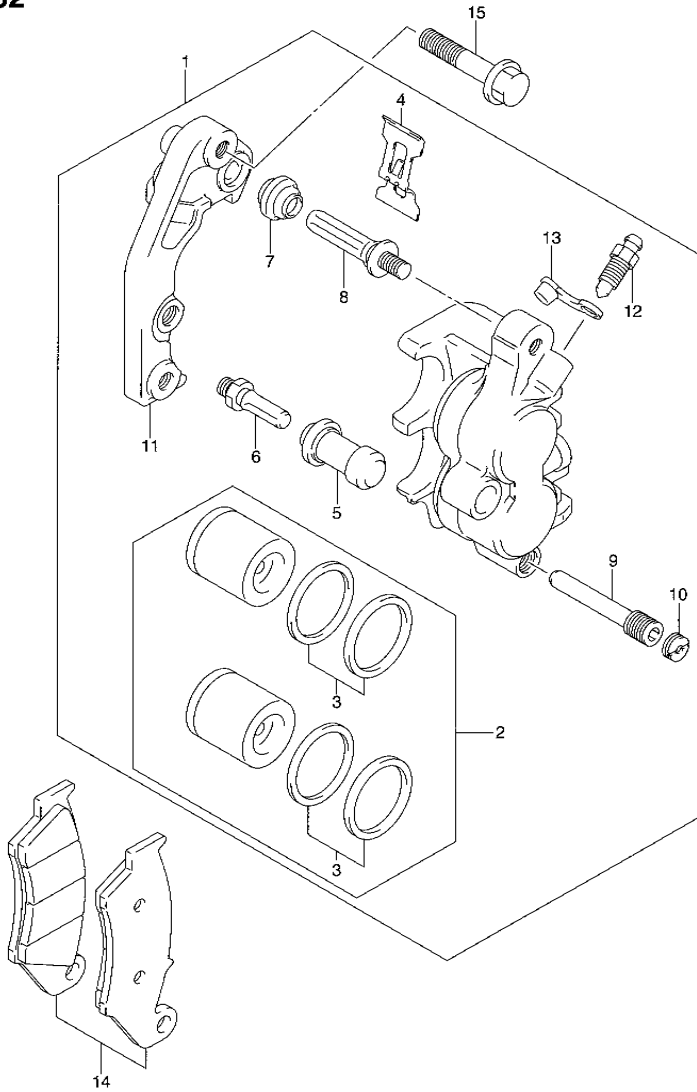


FIG.32 (E-6) FRONT CALIPER

REF NO.	PART NO.	DESCRIPTION	Q'TY	REMARKS
1	59300-37F01-999	CALIPER ASSY, FRONT	1	
2	59300-27840	·PISTON SET	1	
3	59300-13820	··SEAL SET, PISTON	1	
4	59315-13E00	·SPRING	1	
5	59386-13A00	·BOOT	1	
6	59382-37F00	·PIN	1	
7	59303-14500	·BOOT	1	
8	59305-27C00	·PIN	1	
9	59345-13E00	·PIN	1	
10	59146-21E10	·PLUG	1	
11	59350-13E00	·BRACKET	1	
12	59121-01A00	·BLEEDER	1	
13	59122-01A00	·CAP	1	
14	59301-36810	PAD SET	1	
15	09103-08403	BOLT (8X40)	2	

FIG.33

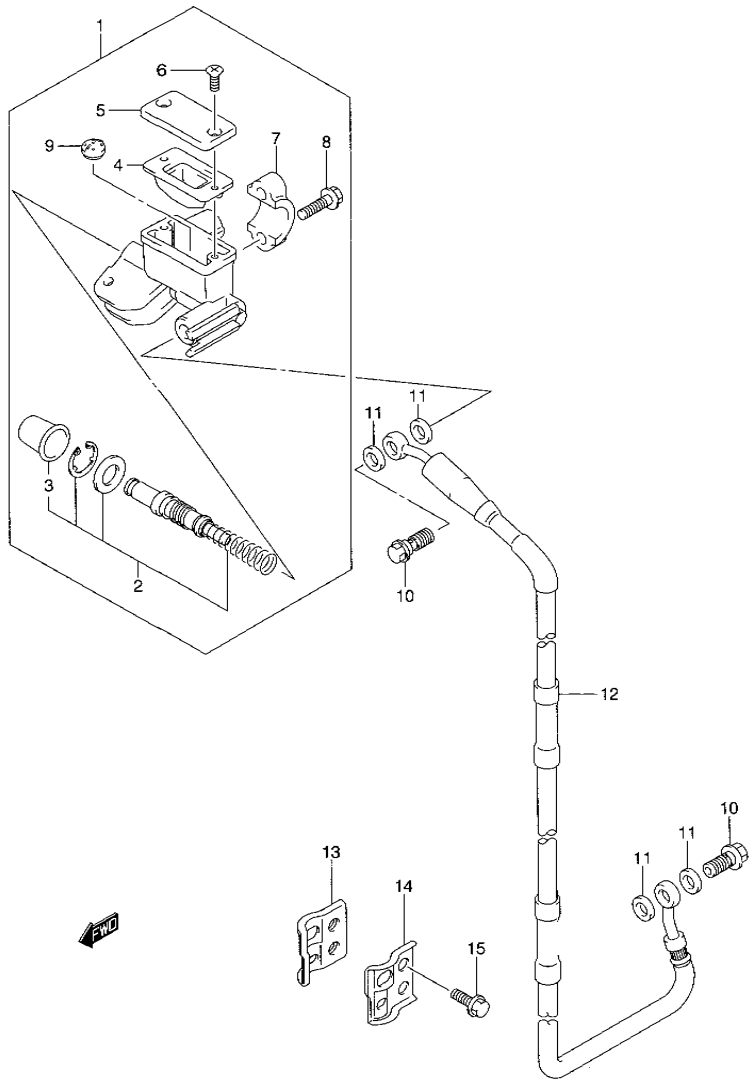


FIG.33 (E-7) FRONT MASTER CYLINDER

REF NO.	PART NO.	DESCRIPTION	Q'TY	REMARKS
1	59600-37F00	CYLINDER ASSY, FRONT MASTER	1	
2	59600-37810	·PISTON & CUP SET	1	
3	59666-44300	··BOOT	1	
4	59667-14500	·DIAPHRAGM	1	
5	59669-27C01	·CAP	1	
6	69689-49300	·SCREW	2	
7	59671-27C00	·HOLDER (SILVER)	1	
8	59675-06F00	·BOLT	2	
9	59748-36E00	·SEPARATOR	1	
10	09360-10053	BOLT (10X1.25X22)	2	
11	09161-10009	WASHER	4	
12	59480-37F11	HOSE, FRONT BRAKE	1	
13	59260-36E00	CLAMP, INNER	1	
14	59271-36E00	CLAMP, OUTER	1	
15	09103-06234	BOLT	2	

FIG.34

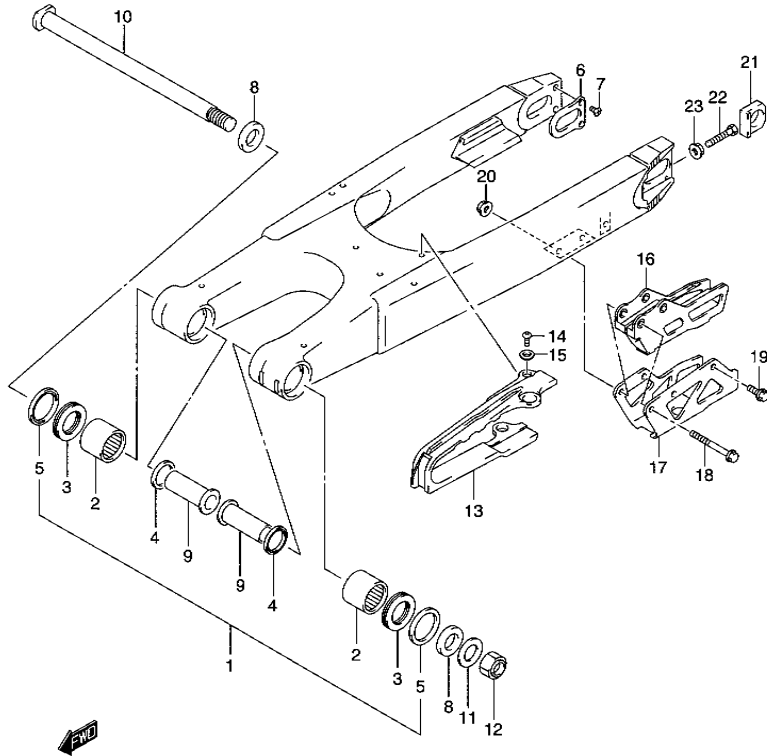


FIG.34 (E-8) REAR SWINGING ARM

REF NO.	PART NO.	DESCRIPTION	Q'TY	REMARKS
1	61000-37F50	SWINGING ARM ASSY, REAR	1	
2	09263-22017	•BEARING, PIVOT (22X29X30)	2	
3	09263-22064	•BEARING, OUTER (22X35X2)	2	
4	09285-22001	•SEAL, INNER (22X29X4)	2	
5	61262-36E00	•SEAL, OUTER (29.2X37X4)	2	
6	61128-37E20	•PLATE, PR SWINGINGARM, REAR	2	
7	02122-0410B	•SCREW (4X10)	4	
8	61251-36E01	SPACER, PIVOT OUTER	2	
9	61252-37F01	SPACER, PIVOT INNER	2	
10	61211-28C00	SHAFT, PIVOT	1	
11	08322-0116B	WASHER	1	
12	09159-16007	NUT	1	
13	61273-37F20	BUFFER, CHAIN TOUCH DEFENSE	1	
14	02112-0508B	SCREW	3	
15	09169-05022	WASHER	3	
16	61341-35G00	GUIDE, CHAIN	1	
17	61342-37F00	PLATE, GUIDE OUTER	1	
18	09103-06242	BOLT, UPPER	2	
19	09103-06233	BOLT, REAR	1	
20	08316-1006B	NUT	2	
21	61445-37F10	WASHER, CHAIN ADJUSTER	2	
22	09100-08287	BOLT (8X50)	2	
23	09159-08034	NUT	2	

4

FIG.35

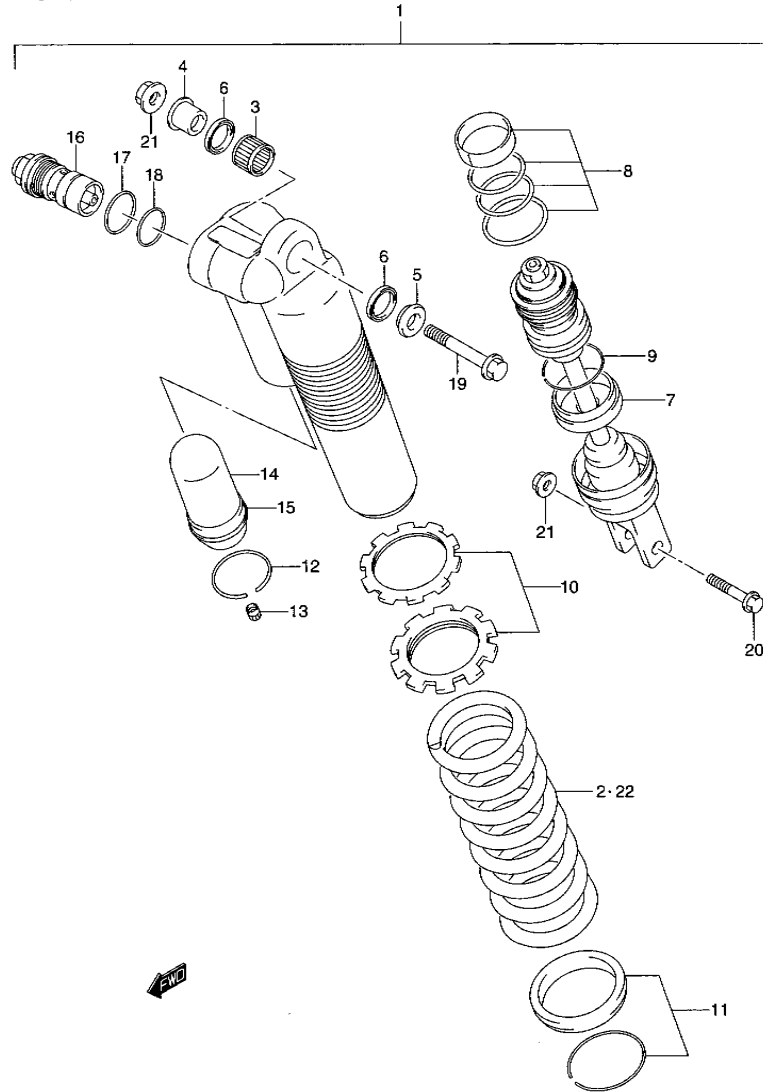


FIG.35 (E-9) REAR SHOCK ABSORBER

REF NO.	PART NO.	DESCRIPTION	QTY	REMARKS
1	62100-37FK0-YKS	ABSORBER ASSY, RR SHOCK (RED)	1	
2	62211-37FK0	·SPRING (K=5.3)	1	
3	09263-16033	·BEARING (16X22X12)	1	
4	62684-36F00	·SPACER, BEARING RH	1	
5	62685-36F00	·SPACER, BEARING LH	1	
6	09284-16005	·SEAL, DUST RH	2	
7	62120-37FJ0	·ROD, PISTON	1	
8	62150-36EB0	·O RING SET	1	
9	62279-36E80	·RING, STOPPER	1	
10	62190-36F00	·ADJUSTER SET	1	
11	62220-36F00	·SPRING SEAT SET	1	
12	62278-36E00	·RING, STOPPER	1	
13	51294-20400	·CAP	1	
14	62273-36F00	·BLADDER	1	
15	62275-36E00	·CAP, CHAMBER	1	
16	62130-37FJ0	·BOLT, PLUG	1	
17	62131-28E00	·O RING	1	
18	51174-43D00	·O RING	1	
19	09103-10360	BOLT	1	
20	62221-37F30	BOLT	1	
21	09159-10067	NUT	2	
22-1	62211-37FH0	SPRING (SOFT, K=4.8)	1	OPT
22-2	62211-37FJ0	SPRING (SOFT, K=5.1)	1	OPT
22-3	62211-37FL0	SPRING (HARD, K=5.5)	1	OPT
22-4	62211-37FM0	SPRING (HARD, K=5.6)	1	OPT

FIG.36

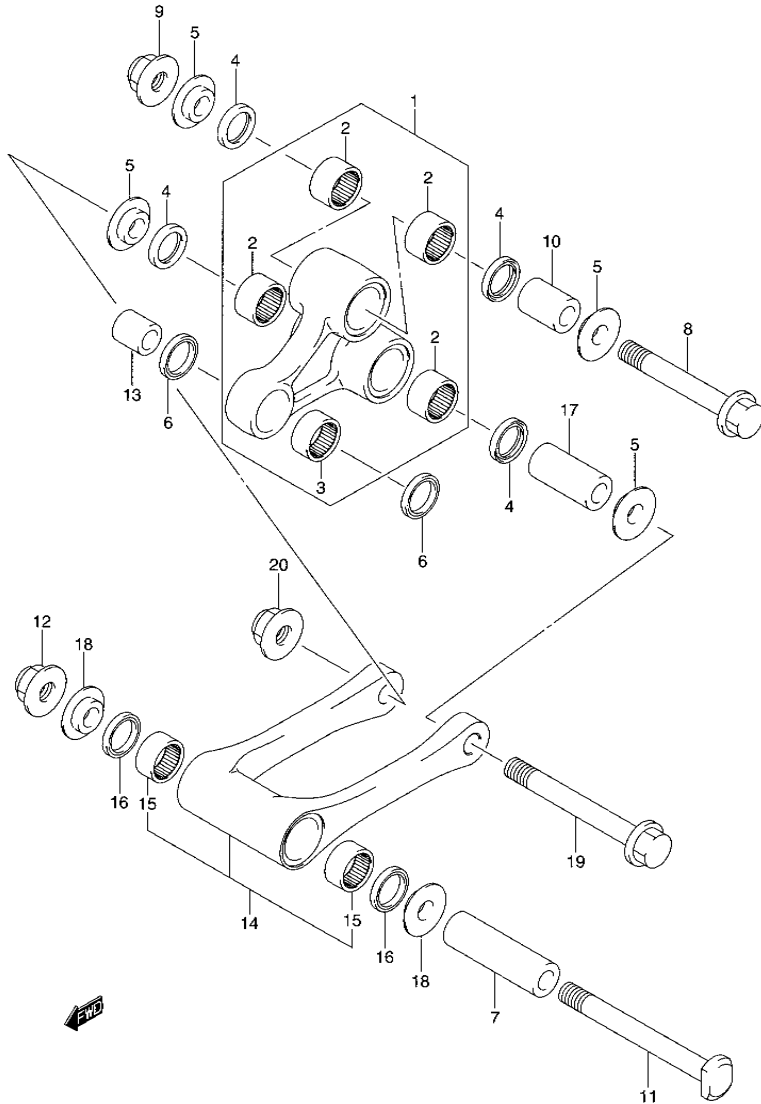


FIG.36 (E-10) REAR CUSHION LEVER

REF NO.	PART NO.	DESCRIPTION	QTY	REMARKS
1	62600-37860	LEVER SET, REAR CUSHION	1	
2	09263-20090	·BEARING (20X26X14)	4	
3	09263-20083	·BEARING (20X26X12)	1	
4	09284-20003	SEAL, DUST (19X26X4)	4	
5	62647-37F10	SPACER	4	
6	09284-20001	SEAL, REAR (20X26X4.5)	2	
7	62317-37F10	SPACER, RR CUSHION ROD	1	
8	62658-37F10	BOLT, RR CUSHION ROD	1	
9	09159-12056	NUT	1	
10	62648-37F10	SPACER, CENTER (15X20X44)	1	
11	62621-37F10	BOLT, CENTER (12X100)	1	
12	09159-12056	NUT	1	
13	62684-36E00	SPACER, REAR CUSHION LEVER	1	
14	62600-37870	ROD SET, REAR CUSHION LEVER	1	
15	09263-20090	·BEARING	2	
16	09284-20003	SEAL	2	
17	62646-37F10	SPACER, RR CUSHION LOWER	1	
18	62647-37F10	SPACER	2	
19	62657-37F10	BOLT, ROD	1	
20	09159-12056	NUT	1	

4

FIG.37

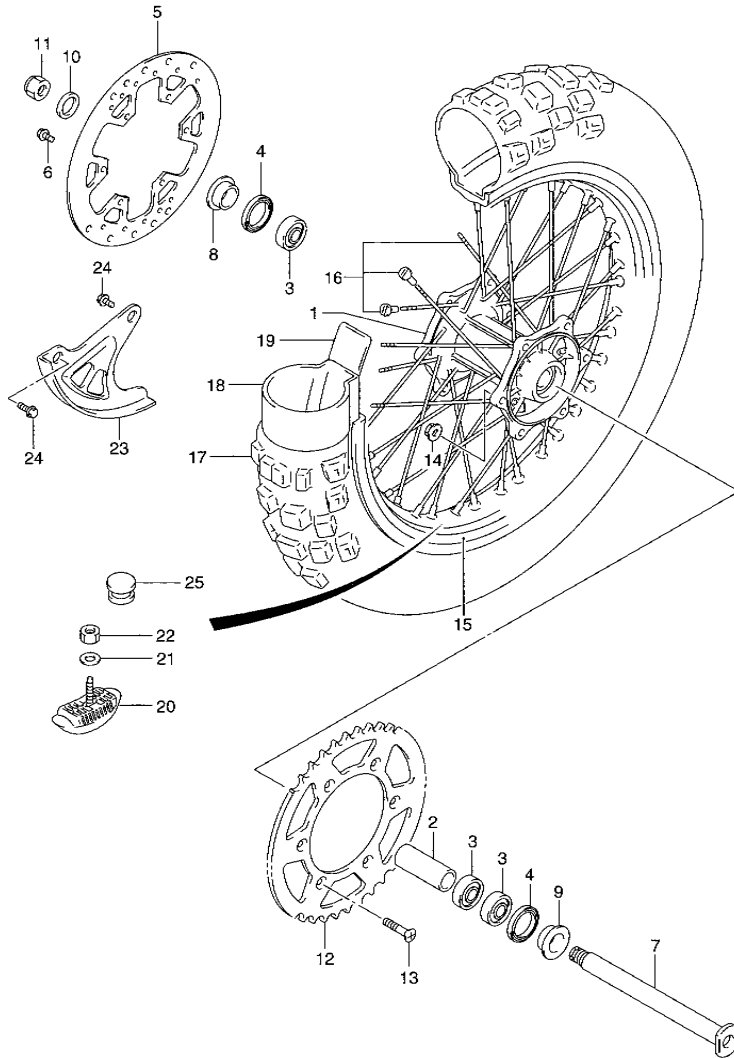


FIG.37 (E-11) REAR WHEEL

REF NO.	PART NO.	DESCRIPTION	QTY	REMARKS
1	64111-36E00	HUB, REAR WHEEL	1	
2	64731-36E00	SPACER, BEARING (22.5X30X102)	1	
3	09262-22033	BEARING (22X44X12)	3	
4	09283-30023	SEAL, DUST (30X44X7)	2	
5	69211-37F20	DISC, REAR BRAKE	1	
6	09103-06280	BOLT	6	
7	64711-37F00	AXLE, REAR	1	
8	64751-36E00	SPACER, RH	1	
9	64751-36E00	SPACER, LH	1	
10	09160-19022	WASHER	1	
11	09159-18007	NUT	1	
12-1	64511-36E00	SPROCKET, REAR (NT:50)	1	
12-2	64511-28E00	SPROCKET, REAR (NT:49)	1	OPT
12-3	64511-37E00	SPROCKET, REAR (NT:48)	1	OPT
12-4	64511-40261	SPROCKET, REAR (NT:51)	1	OPT
13	09120-08017	SCREW (8X30.5)	6	
14	09159-08067	NUT	6	
15	65311-37E00	RIM, REAR WHEEL (2.15X19)	1	
16	65320-37F20	SPOKE SET, WHEEL	1	
17	65110-37F40	TIRE, REAR (110/90-19) (BRIDGESTONE)	1	
18	65200-28C20	TUBE ASSY, WHEEL INNER	1	
19	65261-28C20	PROTECTOR, INNER TUBE	1	
20	65270-28E00	STOPPER, BEAD	1	
21	08322-0108B	WASHER	1	
22	08310-0008B	NUT	1	
23	69231-37F11	COVER, REAR DISC	1	
24	09116-06197	BOLT	2	
25	09250-08013	CAP	1	

FIG.38

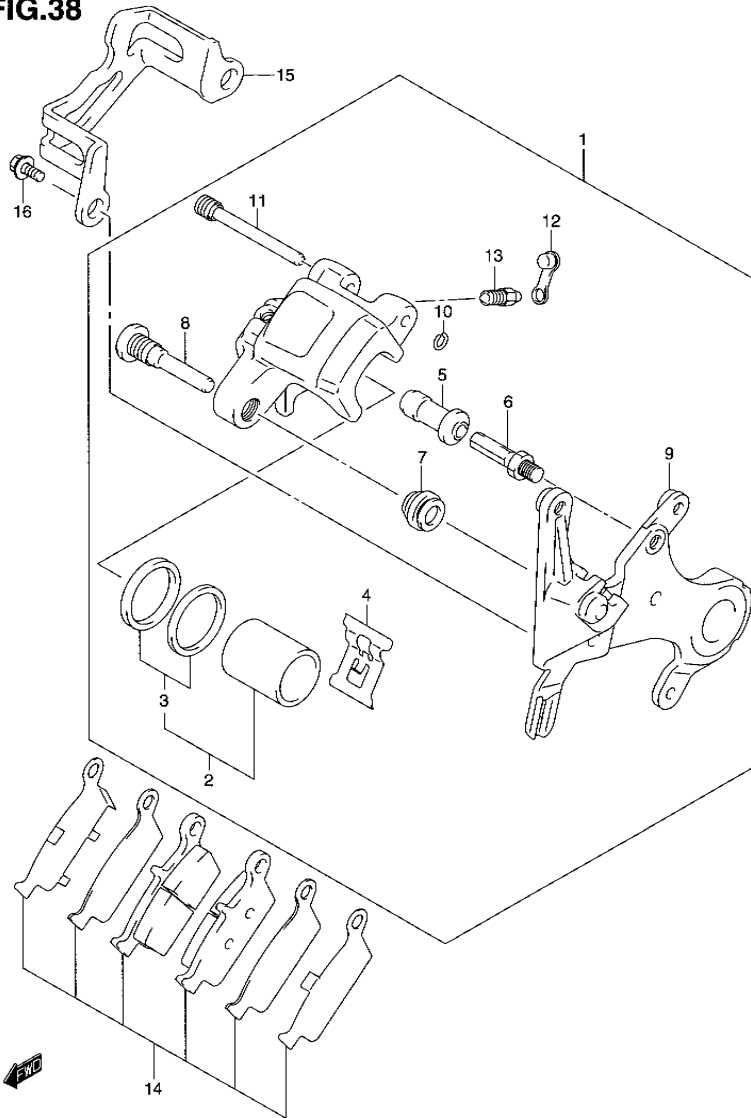


FIG.38 (E-12) REAR CALIPER

REF NO.	PART NO.	DESCRIPTION	QTY	REMARKS
1	69100-37F40-999	CALIPER ASSY, REAR	1	
2	69100-43810	•PISTON SET	1	
3	69100-36810	••SEAL SET, PISTON	1	
4	59315-36E00	•SPRING	1	
5	59386-13A00	•BOOT	1	
6	59382-14500	•PIN	1	
7	59303-14500	•BOOT	1	
8	59305-36E00	•PIN	1	
9	69350-37F20	•BRACKET	1	
10	59145-37F00	•RING, STOPPER	1	
11	69345-37F00	•PIN	1	
12	59121-01A00	•BLEEDER	1	
13	59122-01A00	•CAP	1	
14	69100-37840	PAD & SHIM SET	1	
15	69725-37F00	GUARD, REAR CALIPER	1	
16	09116-06197	BOLT	2	

4

FIG.40

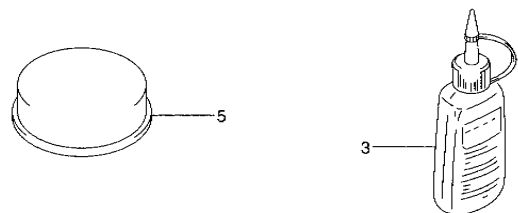
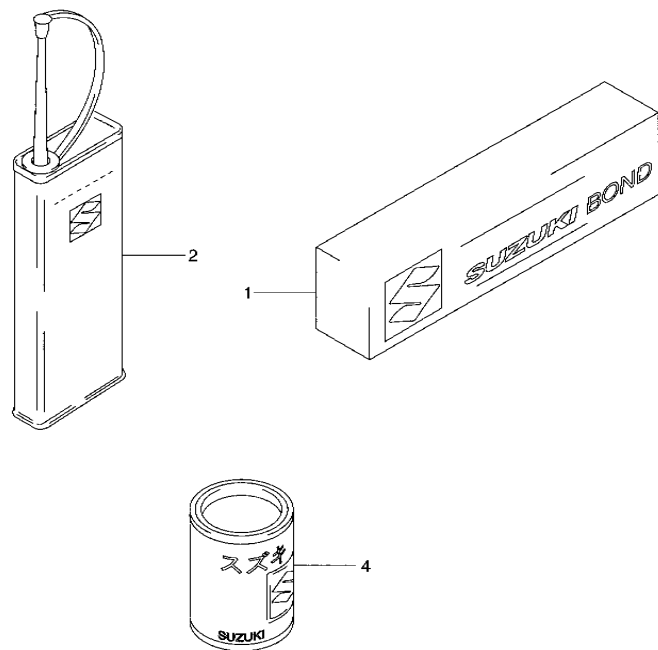


FIG.40 (E-14) OPTIONAL

REF NO.	PART NO.	DESCRIPTION	Q'TY		REMARKS
1	99000-31030	SUZUKI BOND NO.4	1	100G	
2	99000-32040	CEMENT, THREAD LOCK	1	200G	
3-1	99104-32030	THREAD LOCK, SUPER (1363A)	1	50G	
3-2	99000-32050	THREAD LOCK, SUPER (1342)	1	50G	
3-3	99104-32020	THREAD LOCK, SUPER (1361A)	1	50G	
3-4	99000-32110	THREAD LOCK, SUPER (1322)	1	50G	
3-5	99000-32120	THREAD LOCK, SUPER (1424)	1	50G	
3-6	99000-32130	THREAD LOCK, SUPER (1360)	1	50G	
4	99000-25030	GREASE, SUPER	1	150G	
5	99000-25110	GREASE, BRAKE PAD (PBC)	1	20G	

4



PARTS NUMBER INDEX

PART NO.	FIG.NO.-REF.NO.	PART NO.	FIG.NO.-REF.NO.	PART NO.	FIG.NO.-REF.NO.
10000		11483-37E02	5-13	13383-37FG0	7-40
		11484-37E00	1-11	13383-37FH0	7-40
			5-4	13383-37FJ0	7-40
		11971-25D00	5-10	13383-37FK0	7-31
		12110-37F30-0F0	6-1		7-40
11111-37F40	2-1		6-22	13383-37FL0	7-40
11147-37F00	1-2	12110-37830	6-21	13383-37FM0	7-40
	2-3	12141-37F00	6-2	13383-37FN0	7-40
11148-37F00	1-3		6-23	13383-37FP0	7-40
	2-4	12151-28C00	6-3	13394-28E00	7-9
11201-37860	2-9		6-24	13410-43D30	7-24
11202-37F50	3-12	12161-37F20	6-7	13424-43D30	7-7
11203-37F50	3-13	12200-37F40	6-6	13451-37F00	7-39
11204-37F50	3-14	12210-37F20	6-9	13453-37E00	7-34
11205-37F50	3-15	12220-37F40	6-11	13551-37F80	7-10
11206-37F50	3-16	12260-37F40	6-12	13573-37F00	7-6
11207-37F50	3-17	12670-37830	3-30	13580-37F80	7-38
11208-37F50	3-18	12672-36F10	3-31	13581-37F80	7-8
11209-37F50	3-19	12674-36F10	3-32	13582-37F80	7-35
11231-37F20	2-18	12675-36F11	3-33	13583-37F80	7-36
11233-37F20	1-4	12676-36F10	3-34	13602-26E10	7-18
	2-19	12677-37F40	3-35	13602-37F00	7-37
11234-37F20	1-5	12681-03B00	3-2	13681-43D30	7-2
	2-27	12682-36F21	3-4	13686-36E00	7-25
11238-37F20	1-6	12689-37F50	3-1		7-26
	2-22	13110-37F40	4-19		7-27
11241-37F20	1-7	13150-37F30	4-13	13693-36E00	7-19
	2-11	13152-37F00	4-14	13694-37F30	4-21
11248-37F20	2-21	13153-37F30	4-15	13696-44E00	7-13
11249-37F20	2-26	13155-37F00	4-16	13700-37F50	8-1
11251-37F20	3-20	13156-37F00	4-17	13736-37F50	8-15
11252-37F20	2-31	13160-37E01	7-33	13738-36E01	8-10
11257-37E10	3-9	13200-37FB0	7-1	13741-36F30	8-16
11259-37F21	3-21	13240-36E20	7-15	13780-37F20	8-2
11261-37F40	3-22	13246-28E00	7-17	13790-37F20	8-3
11273-37F50	3-23	13247-28E00	7-16	13791-37F20	8-4
11274-37F20	3-6	13261-37F80	7-3	13792-13A01	8-6
11279-37F30	3-8	13262-37F00	7-5	13795-37F20	8-13
11288-37F40	3-24	13262-37F80	7-4	13796-37F20	8-14
11301-37860	4-1	13270-43D30	7-20	13831-35F00	8-12
11341-37F20	5-1	13280-43D30	7-21	13831-37F20	8-5
11351-37F00	5-12	13291-26E00	7-23	13838-02B00	8-11
11360-36E00	5-15	13295-26E00	7-22	13881-37F30	8-7
11371-37F01	5-3	13370-43D30	7-14	14171-28C30	1-12
11401-37811	1-1	13383-37FA0	7-40		9-2
11481-37F20	1-8	13383-37FB0	7-40	14172-28C30	1-13
	4-2	13383-37FC0	7-40		9-1
11482-37F01	1-9	13383-37FD0	7-40	14310-37F21	9-3
	5-2	13383-37FE0	7-40	14330-37F50	9-4
11483-37E02	1-10	13383-37FF0	7-40	14351-37F50	9-23

PART NO.	FIG.NO.-REF.NO.	PART NO.	FIG.NO.-REF.NO.	PART NO.	FIG.NO.-REF.NO.
14761-27C00	9-13	24341-37F20	12-17	33410-37F00	16-7
14762-01B01	9-14	24351-37F20	12-18	33510-20A02	16-9
	20-16	24741-20A00	12-43	33652-19F00	20-19
14763-36E00	9-15	24741-21A00	3-10	36610-37F30	16-1
14770-37F00	9-19		12-32	36651-48E00	16-2
14771-28C02	9-6		13-6	37820-36E00	16-10
16910-09401	2-10	24741-37F00	6-16		
17411-37F10	5-19	25211-28C01	13-1		
17431-37F00	5-20	25221-37E10	13-2		
17461-37F00	5-23	25231-28C02	13-3		
17491-37F10	5-22	25310-37F00	13-7		
17510-37F10	5-25	25313-37F00	13-9		
17710-37F00	10-1	25322-37F01	13-10		
17720-37F00	10-5	25323-34201	13-11		
17730-12C20	10-3	25324-34201	13-12		
17761-37F10-YU1	10-15	25331-37F01	13-13	41100-37F60-YU8	17-1
17762-37F10-YU1	10-16	25350-37F30	13-20	41200-37F30	17-2
17787-19A00	10-7	25355-37F00	13-23	41991-37F10	17-6
17831-37F00	10-21	25381-37F30	13-21	41993-37F20	17-9
17851-37F00	10-10	25411-37F20	13-4	42310-36E40	18-1
17852-37F00	10-11	25421-27C01	13-5	43100-37F20	19-1
17853-36F00	10-12	25510-37F10	13-25	43142-37F00	19-3
		25600-37F20	13-32	43145-37F00	19-6
		25671-37F10	13-26	43551-37F10	18-2
		26211-37F00	14-1	43561-37F10	18-3
		26221-01B01	14-2	43910-37F00	17-13
		26231-37F00	14-3	44110-37F21-YU1	20-1
		26232-40200	14-4	44131-27C01	20-2
		26240-37F00	14-5	44132-37F10	20-4
		26260-37E01	12-34	44210-37F00	20-6
21111-37F20	6-18	26300-37F20	14-12	44248-27C00	20-7
21200-37F10	11-1	26313-28E20	14-16	44300-37F10	21-1
21251-37E01	11-2	27511-37F00	12-37	44421-37F00	21-3
21410-37F50	11-4	27531-28C00	12-38	44541-26C00	20-9
21441-37F50	11-5	27600-43D01-114	12-39	44541-37F00	20-10
21451-37F00	11-6	27620-43D00	12-40	44542-37F00	20-12
21462-37F20	11-7	27641-37E00	5-18	44560-27C00	20-14
23110-37F00	11-13			45100-37F60-DNA	28-1
23121-37F00	11-14			45100-37F60-ELU	28-1
23200-37E02	11-15			47111-37F50-30H	22-1
24120-37F50	12-1			47161-37F00	22-8
24131-37F20	12-13			47211-36F20-30H	22-2
24221-37F00	12-2				
24231-37F11	12-3				
24241-37E01	12-4				
24242-37F00	12-5	32100-37F30	15-1		
24251-37E00	12-6	32101-37F30	15-2		
24311-37E00	12-14	32102-37F20	15-3		
24321-37E02	12-15	32900-37F50	16-5		
24331-37F02	12-16	32980-37F00	16-6		

PART NO.	FIG.NO.-REF.NO.	PART NO.	FIG.NO.-REF.NO.	PART NO.	FIG.NO.-REF.NO.
51103-37FC0	29-1	55261-28330	31-12	59315-36E00	38-4
51104-37FC0	29-2	55311-28C01	31-13	59345-13E00	32-9
51110-37FC0	29-3	55311-37F00	31-13	59350-13E00	32-11
51117-37F80	29-16	55320-37F00	31-14	59382-14500	38-6
51118-37F80	29-20	55320-37F10	31-14	59382-37F00	32-6
51120-37FC0	29-4	56111-35G00	24-1	59386-13A00	32-5
51121-36F00	29-5	56170-35G10	24-2		38-5
51123-28E30	29-17	56211-35G00	30-13	59480-37F11	33-12
51130-37FC0	29-11	56221-35G00	30-15	59600-37F00	33-1
51153-37F80	29-8	56241-42AE0	30-16	59600-37810	33-2
51156-27C40	29-9	56242-28C60	30-17	59666-44300	33-3
51158-36F00	29-7	56243-42A00	30-19	59667-14500	33-4
51167-36F00	29-6	56321-35G00	30-18	59669-27C01	33-5
51170-37FC0	29-13	57100-28E01	25-2	59671-27C00	33-7
51171-37FC0	29-12	57110-36E01	25-1	59675-06F00	33-8
51171-37FD0	29-31	57114-28E00	25-3	59748-36E00	33-9
51171-37FE0	29-31	57129-28E01	25-7		
51173-37F80	29-10	57211-36E01	25-12		
51174-36E40	29-18	57310-37F00	25-8		
51174-43D00	35-18	57341-37F00	25-23		
51175-37F80	29-19	57342-37F00	25-24		
51177-36E20	29-14	57343-35G00	25-11		
51190-37FC0	29-23	57431-14500	25-9	60000	
51191-36F40	29-24	57431-21D11	25-15		
51198-37F80	29-26	57441-37F00	25-17		
51211-37FC0	29-27	57500-37F11	25-13	61000-37F50	34-1
51294-20A00	35-13	57512-37F00	25-22	61128-37E20	34-6
51310-37F70	30-9	57621-28C40	25-14	61196-27C30	39-14
51321-37F90	30-14	58210-37F11	24-3	61211-28C00	34-10
51328-37F80	29-25	58300-37F20	24-4	61251-36E01	34-8
	30-5	58621-37F80	30-3	61252-37F01	34-9
	30-10	59121-01A00	32-12	61262-36E00	34-5
51351-37FC0	29-15		38-12	61273-37F20	34-13
51353-37F70	30-12	59122-01A00	32-13	61341-35G00	34-16
51356-29E00	30-11		38-13	61342-37F00	34-17
51357-36F20	29-21	59145-37F00	38-10	61445-37F10	34-21
51358-28E30	29-22	59146-21E10	32-10	62100-37FK0-YKS	35-1
51410-37F80	30-1	59220-37F20	31-8	62120-37FJ0	35-7
51501-37F70	29-28	59231-36E20-YU1	31-18	62130-37FJ0	35-16
51511-37F70	29-29	59260-36E00	33-13	62131-28E00	35-17
51631-37F00	30-7	59271-36E00	33-14	62150-36E80	35-8
51643-37F00	30-8	59300-13820	32-3	62190-36F00	35-10
53111-37F01-YU1	23-1	59300-27840	32-2	62211-37FH0	35-22
53112-37F01	22-4	59300-37F01-999	32-1	62211-37FJ0	35-22
54111-36E00	31-1	59301-36810	32-14	62211-37FK0	35-2
54711-37F00	31-5	59303-14500	32-7	62211-37FL0	35-22
54731-36E00	31-2		38-7	62211-37FM0	35-22
54741-37F01	31-6	59305-27C00	32-8	62220-36F00	35-11
55110-37F40	31-10	59305-36E00	38-8	62221-37F30	35-20
55200-16510	31-11	59315-13E00	32-4	62273-36F00	35-14

PART NO.	FIG.NO.-REF.NO.	PART NO.	FIG.NO.-REF.NO.	PART NO.	FIG.NO.-REF.NO.
62275-36E00	35-15	69100-37840	38-14	99011-37F57-04F	27-3
62278-36E00	35-12	69100-43810	38-2	99104-32020	40-3
62279-36E80	35-9	69211-37F20	37-5	99104-32030	40-3
62317-37F10	36-7	69231-37F11	37-23		
62600-37860	36-1	69232-37F00	10-17		
62600-37870	36-14		10-19		
62621-37F10	36-11	69232-37F01	22-7	00000	
62646-37F10	36-17		26-3		
62647-37F10	36-5	69345-37F00	38-11		
	36-18	69350-37F20	38-9		
62648-37F10	36-10	69480-36F31	39-11	01421-1030A	2-12
62657-37F10	36-19	69600-04820	39-2	01421-1040A	2-13
62658-37F10	36-8	69604-37F30	39-1	01421-1050A	2-14
62684-36E00	36-13	69667-37F20	39-8	01500-0612B	14-10
62684-36F00	35-4	69669-37F20	39-7	01547-0616B	23-3
62685-36F00	35-5	69670-27A30	39-5	01547-06207	5-14
63111-37F00-YU1	26-1	69689-37F30	39-9		13-33
63114-37F00	26-11	69689-49300	33-6		15-4
63114-37F10	26-12	69691-00A00	39-3	01547-06253	25-4
63114-37F20	26-13	69692-37F20	39-4	02112-0508B	34-14
64111-36E00	37-1	69693-05A00	39-6	02112-0612B	12-33
64511-28E00	37-12	69725-37F00	38-15	02112-33165	16-11
64511-36E00	37-12			02122-0410B	34-7
64511-37E00	37-12			02122-04103	25-5
64511-40261	37-12			02122-04163	25-6
64711-37F00	37-7			02122-0612A	12-44
64731-36E00	37-2			02122-0612B	6-17
64751-36E00	37-8			02122-0620B	20-5
	37-9			02142-0510A	39-15
65110-37F40	37-17			04111-2015A	39-18
65200-28C20	37-18	94911-37F02-30H	23-6	04111-2020A	19-4
65261-28C20	37-19	99000-25030	40-4	04111-2520A	18-5
65270-14300	31-15	99000-25110	40-5	04211-09109	5-5
65270-28E00	37-20	99000-31030	40-1		5-21
65311-37E00	37-15	99000-32040	40-2	04221-04089	2-2
65320-37F20	37-16	99000-32050	40-3		13-8
68151-37F10-CFM	23-2	99000-32110	40-3	06111-06003	25-18
68175-37F20-GY8	26-8	99000-32120	40-3	06111-07004	14-15
68176-37F20-GY8	26-9	99000-32130	40-3	06111-12004	3-39
68367-37F00	27-2	99011-37F56-01A	27-3	07120-0610B	4-6
68660-37F60-DRA	10-22	99011-37F56-01E	27-3		5-27
68660-37F70-EMA	10-24	99011-37F56-01H	27-3	07130-0512B	3-29
68661-29F00-DPZ	29-32	99011-37F56-01K	27-3	08113-69010	5-24
68670-37F60-DRA	10-23	99011-37F56-029	27-3	08130-69047	31-3
68670-37F70-EMA	10-25	99011-37F56-04F	27-3	08140-69050	13-19
68721-13A00-GY8	26-10	99011-37F57-01A	27-3	08143-62030	12-10
68921-37F70	27-1	99011-37F57-01E	27-3	08143-62057	12-11
68921-37F80	27-1	99011-37F57-01H	27-3	08211-06121	5-29
69100-36810	38-3	99011-37F57-01K	27-3		13-24
69100-37F40-999	38-1	99011-37F57-029	27-3	08221-25305	12-31

5

5

PART NO.	FIG.NO.-REF.NO.	PART NO.	FIG.NO.-REF.NO.	PART NO.	FIG.NO.-REF.NO.
08310-00057	8-9	09103-06256	3-11	09159-08067	37-14
08310-0008B	31-17		8-18	09159-10067	35-21
	37-22		29-30	09159-10078	2-30
08316-1006B	34-20	09103-06280	20-3		4-10
08316-10063	25-10		37-6	09159-10108	2-17
08316-1012B	15-5	09103-08043	17-10	09159-12056	36-9
08319-21068	25-16	09103-08070	17-3		36-12
08319-3106A	9-7	09103-08083	17-15		36-20
08319-3108A	17-4	09103-08170	17-7	09159-16007	34-12
08319-31107	30-20	09103-08340	14-17	09159-18007	37-11
08322-0106B	5-17	09103-08403	32-15	09159-18016	31-7
	15-6	09103-10087	4-8	09160-06084	9-18
08322-0108B	31-16	09103-10149	2-29		9-22
	37-21	09103-10339	6-19	09160-06114	9-9
08322-0110B	18-8	09103-10360	35-19		9-10
08322-0116B	34-11	09103-10399	4-9	09160-06136	23-4
08331-31146	13-31	09104-08036	17-5	09160-08119	39-17
08331-3117A	12-36	09106-04003	3-5	09160-19022	37-10
08341-31039	15-7		3-25	09160-22082	11-10
09100-08287	34-22	09108-08227	2-7	09160-24033	6-8
09103-05022	3-7	09108-10141	2-15	09161-10009	33-11
09103-05023	2-20	09111-06041	13-22		39-13
	2-23	09111-06087	30-4	09164-08011	17-11
	2-28	09116-05019	11-8	09164-11004	6-20
09103-06233	9-17	09116-06186	9-16	09167-22027	11-11
	10-18		10-8	09167-25026	12-7
	10-20	09116-06188	22-3	09168-06004	4-7
	22-5	09116-06195	20-17		5-28
	23-7	09116-06197	37-24	09168-08015	3-41
	31-20		38-16	09168-08021	2-6
09103-06234	34-19	09118-05003	3-26	09168-12002	4-12
	9-21	09120-05003	3-3	09169-05022	34-15
	16-8	09120-06014	31-9	09169-06053	8-19
	21-2	09120-08017	37-13		31-19
	22-6	09125-06110	13-17	09169-06078	23-5
	25-21	09126-06011	13-18	09180-06120	9-12
	26-6	09127-06016	14-13	09180-06243	10-9
09103-06235	33-15	09134-06009	25-20	09180-06268	20-18
09103-06242	26-4	09139-06134	20-15	09181-08111	17-14
	34-18	09139-06139	39-10	09181-08139	5-26
09103-06244	4-4	09140-18013	11-9		13-27
09103-06245	4-5	09148-06015	10-2	09181-14139	13-30
	5-9		10-6	09181-15223	3-36
09103-06250	4-18	09148-06021	8-17	09181-17130	12-35
	5-6		9-20	09181-17223	12-12
09103-06251	5-7	09152-06024	26-2		12-26
	5-16	09159-08034	34-23	09181-20195	12-27
	9-8	09159-08049	2-5	09181-22139	14-11
09103-06252	26-5	09159-08067	17-8	09181-22240	12-28
09103-06253	5-8		17-12	09181-25167	12-29

PART NO.	FIG.NO.-REF.NO.	PART NO.	FIG.NO.-REF.NO.	PART NO.	FIG.NO.-REF.NO.
09181-25167	12-30	09300-25031	12-23	09491-33010	7-41
09200-08048	39-16	09320-11015	9-11	09491-34010	7-41
09200-10022	18-4	09351-35653-600	7-29	09491-34011	7-11
09206-13017	2-16	09351-50803-00A	10-4		7-41
	4-3	09352-50823-600	2-24	09491-35009	7-41
09209-05023	13-14		2-25	09491-35010	7-41
09247-12012	4-11		20-8	09491-36008	7-41
09250-08013	37-25	09360-10053	33-10	09491-37008	7-41
09261-03017	3-37		39-12	09491-38011	7-41
09261-04005	3-27	09380-22006	12-42	09491-39001	7-41
09261-04014	3-28		14-7	09491-40013	7-41
09262-08005	3-40	09380-25010	12-8	09491-41001	7-41
09262-17023	9-22		12-9	09491-42006	7-41
09262-22030	12-19		12-24	09492-35019	7-42
09262-22033	37-3	09381-18002	6-4	09492-40022	7-42
09262-28044	6-13		6-26	09492-42019	7-42
09263-10002	11-16	09401-05402	7-30	09492-45032	7-42
09263-12024	11-17	09401-06101	7-28	09492-48013	7-42
09263-15003	3-38	09401-11101	21-4	09492-50023	7-12
09263-16033	35-3	09402-22511	10-14		7-42
09263-18031	6-5	09402-28513	10-13	09492-52011	7-42
	6-25	09402-56901	4-20	09492-55017	7-42
09263-20083	36-3	09402-70902	8-8	09492-55019	7-32
09263-20090	36-2	09404-06429	16-4	09492-58001	7-42
	36-15	09404-06433	15-8	09492-60016	7-42
09263-22017	34-2	09404-08206	17-16	09813-00134	26-7
09263-22064	34-3	09407-11401	16-12		
09263-24026	6-10	09407-11402	16-3		
09263-25018	13-15	09407-14403	16-12		
09263-29009	11-3	09407-25402	20-13		
09265-30014	30-2	09407-30402	20-11		
09265-30022	30-6	09440-04003	13-16		
09280-17003	5-11		25-19		
09280-20006	12-41	09440-05031	14-14		
09283-14006	13-28	09440-18038	11-12		
09283-20031	14-6	09440-32002	14-8		
09283-25099	6-15	09443-10045	9-5		
09283-28023	31-4	09443-13036	19-5		
09283-28025	6-14	09444-20004	13-29		
09283-30023	37-4	09448-21007	18-6		
09284-15006	19-2	09448-21008	18-7		
09284-16005	35-6	09448-48012	14-9		
09284-20001	36-6	09482-00561	2-8		
09284-20003	36-4	09491-30018	7-41		
	36-16	09491-30019	7-41		
09285-12004	11-18	09491-31012	7-41		
09285-22001	34-4	09491-31013	7-41		
09289-28012	12-20	09491-32010	7-41		
09300-20037	12-21	09491-32011	7-41		
09300-25031	12-22	09491-33009	7-41		

SUZUKI **RM250(K7/K8)** PARTS CATALOGUE

2nd Edition
Published in Jun., 2007

©2007 **SUZUKI MOTOR CORPORATION** All rights reserved.

No part of this document may be reproduced or transmitted in any form or by any means, electronic or mechanical, for any purpose, without the express written permission of Suzuki Motor Corporation.

SUZUKI MOTOR CORPORATION

Service & Parts Readiness Group, Field Service Department
300 Takatsuka, Minami, Hamamatsu, Japan

Reprint Prohibited (S)

1

**INFORMATION
ILLUSTRATION INDEX**

2

**ENGINE
TRANSMISSION**

3

ELECTRICAL

4

BODY

5

PARTS NUMBER INDEX

SUZUKI MOTOR CORPORATION



* 9 9 0 0 B - 2 8 0 6 4 - 0 1 0 *

9900B-28064-010